

Anti-PsbO subunit of oxygen evolving complex of Photosystem II antibody

Catalog: PHY0344

Product Information

Description:	Rabbit polyclonal antibody
Background:	<p>PsbO is an extrinsic subunit of photosystem II, which has been proposed to play a central role in stabilization of the catalytic manganese cluster.</p> <p>In <i>Arabidopsis thaliana</i>, the PsbO proteins are encoded by two genes: psbO1(AT5G66570) and psbO2 (AT3G50820). PsbO1 is the major isoform in Arabidopsis.</p>
Synonyms:	<p>PsbO, OEE1, 33 kDa subunit of oxygen evolving system of photosystem II, 33 kDa thylakoid membrane protein, Manganese-stabilizing protein 1, MSP-1, OEC 33 kDa subunit, 33 kDa of the oxygen evolving complex (OEC) of PSII, Oxygen-evolving enhancer protein 1, chloroplastic</p>
Immunogen:	Recombinant, full length PsbO of <i>Arabidopsis thaliana</i> AT5g66570.
Form:	Lyophilized
Quantity:	150 µg
Purification:	Protein A purified
Reconstitution:	<p>Reconstitution with 150 µl of 0.01 M sterile PBS.</p> <p>"Note: please spin tube briefly prior to opening it to avoid any losses that might occur from lyophilized material adhering to the cap or sides of the tube".</p>
Stability & Storage:	<p>Use a manual defrost freezer and avoid repeated freeze-thaw cycles.</p> <p>12 months from date of receipt, -20 to -70°C as supplied.</p> <p>6 months, -20 to -70°C under sterile conditions after reconstitution.</p> <p>1 month, 2 to 8°C under sterile conditions after reconstitution.</p>
Shipping:	The product is shipped at 4°C. Upon receipt, store it immediately at the temperature recommended above.

Application Information

Recommended Dilution:	<p>Western Blot (1:1000-1:5000)</p> <p>Note: Optimal dilutions/concentrations should be determined by the end user.</p>
Expected/apparent MW:	35 / 33 kDa

Research Use Only

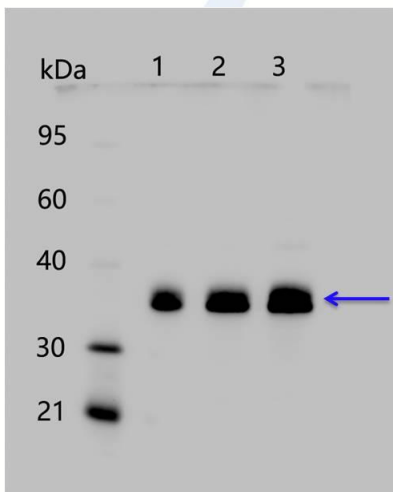
Confirmed Reactivity:

Arabidopsis thaliana

Predicted Reactivity:

For more species homologues information, please contact tech support at tech@phytoab.com.

Application Example



1-3 is thylakoid membrane protein from *Arabidopsis thaliana* leaf containing 0.05 µg, 0.1 µg, and 0.25 µg of chlorophyll, respectively.

Electrophoresis: 15% SDS-Urea-PAGE

Transfer: blotting to NC (nitrocellulose) membrane for 1 h.

Blocking: 5% skim milk at RT or 4°C for 1 h.

Primary antibody: 1:5000 dilution overnight at 4°C.

Secondary antibody: 1:20000 dilution using Goat Anti-Rabbit IgG H&L (HRP) (Cat# PHY6000).

Detection: using chemiluminescence substrate and image were captured with CCD camera.