

Anti-PsaB subunit of photosystem I antibody

Catalog: PHY0054A

Product Information

Description:	Rabbit polyclonal antibody
Background:	The core of the photosystem I reaction center is formed by polypeptides PSI-A and PSI-B, the products of the homologous PsaA and PsaB genes. PsaB is a core protein of PSI complex.
Synonyms:	PsaB, Photosystem I P700 chlorophyll a apoprotein A2, PSI-B
Immunogen:	KLH-conjugated synthetic peptide of PsaB derived from <i>Arabidopsis thaliana</i> ATCG00340.
Form:	Lyophilized
Quantity:	150 µg
Purification:	Immunogen affinity purified
Reconstitution:	Reconstitution with 150 µl of 0.01M sterile PBS. "Note: please spin tube briefly prior to opening it to avoid any losses that might occur from lyophilized material adhering to the cap or sides of the tube".
Stability & Storage:	Use a manual defrost freezer and avoid repeated freeze-thaw cycles. 12 months from date of receipt, -20 to -70°C as supplied. 6 months, -20 to -70°C under sterile conditions after reconstitution. 1 month, 2 to 8°C under sterile conditions after reconstitution.
Shipping:	The product is shipped at 4°C. Upon receipt, store it immediately at the temperature recommended above.

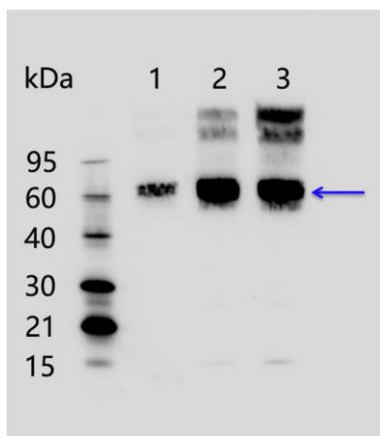
Application Information

Recommended Dilution:	Western Blot (1:1000-1:2000) Note: Optimal dilutions/concentrations should be determined by the end user.
Expected/apparent MW:	82 / 63 kDa
Confirmed Reactivity:	<i>Arabidopsis thaliana</i> , <i>Oryza sativa</i> , <i>Zea mays</i> , <i>Glycine max</i> , <i>Hordeum vulgare</i> subsp. <i>Vulgare</i> .
Predicted Reactivity:	Among 25 analyzed species, the sequence of the synthetic peptide used for immunization is 100% homologues with the sequence in <i>Medicago truncatula</i> , <i>Chlamydomonas reinhardtii</i> , <i>Solanum</i>

Research Use Only

tuberosum, *Gossypium raimondii*, *Cucumis sativus*, *Sorghum bicolor*, *Setaria viridis*, *Panicum virgatum*, *Populus trichocarpa*, *Vitis vinifera*, *Synechocystis sp. PCC 6803*, *Nicotiana tabacum*, *Brassica napus*, *Solanum lycopersicum*, *Spinacia oleracea*, *Triticum aestivum*, and 80-99% homologues with the sequence in *Physcomitrella patens*. For more species homologues information, please contact tech support at tech@phytoab.com.

Application Example



1-3 is thylakoid membrane protein from *Arabidopsis thaliana* leaf containing 0.1µg, 0.25µg, and 0.5µg of chlorophyll, respectively.

Electrophoresis: 15% SDS-Urea-PAGE

Transfer: blotting to NC (nitrocellulose) membrane for 1h.

Blocking: 5% skim milk at RT or 4°C for 1h.

Primary antibody: 1:2000 dilution overnight at 4°C.

Secondary antibody: 1:20000 dilution using Goat Anti-Rabbit IgG H&L (HRP) (Cat# PHY6000).

Detection: using chemiluminescence substrate and image were captured with CCD camera.