

# Anti-PsaL subunit of Photosystem I antibody

Catalog: PHY0064

## Product Information

<b>Description:</b>	Rabbit polyclonal antibody
<b>Background:</b>	PSI is an integral membrane multi-protein complex that catalyzes the electron transfer from plastocyanin to ferredoxin. PsaL is binding pigments and has been shown to be involved in trimerization of PSI in cyanobacteria (but not in plants) and bind pigments in plants and cyanobacteria.
<b>Synonyms:</b>	PsaL, PSI-L
<b>Immunogen:</b>	KLH-conjugated synthetic peptide of PsaL derived from <i>Arabidopsis thaliana</i> AT4G12800.
<b>Form:</b>	Lyophilized
<b>Quantity:</b>	150 µg
<b>Purification:</b>	Protein A purified
<b>Reconstitution:</b>	Reconstitution with 150 µl of 0.01 M sterile PBS. "Note: please spin tube briefly prior to opening it to avoid any losses that might occur from lyophilized material adhering to the cap or sides of the tube".
<b>Stability &amp; Storage:</b>	Use a manual defrost freezer and avoid repeated freeze-thaw cycles. 12 months from date of receipt, -20 to -70°C as supplied. 6 months, -20 to -70°C under sterile conditions after reconstitution. 1 month, 2 to 8°C under sterile conditions after reconstitution.
<b>Shipping:</b>	The product is shipped at 4°C. Upon receipt, store it immediately at the temperature recommended above.

## Application Information

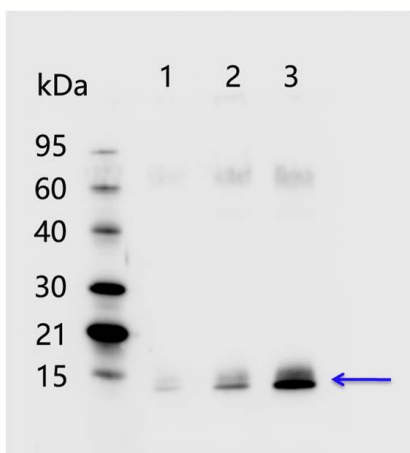
<b>Recommended Dilution:</b>	Western Blot (1:1000-1:2000) Note: Optimal dilutions/concentrations should be determined by the end user.
<b>Expected/apparent MW:</b>	18 / 15 kDa
<b>Confirmed Reactivity:</b>	<i>Arabidopsis thaliana</i>
<b>Predicted Reactivity:</b>	Among 25 analyzed species, the sequence of the synthetic peptide used for immunization is 100% homologues with the sequence in

Research Use Only

*Brassica napus*, *Brassica rapa*, *Zea mays*, and 80-99% homologues with the sequence in *Populus trichocarpa*, *Gossypium raimondii*, *Medicago truncatula*, *Solanum tuberosum*, *Solanum lycopersicum*, *Populus trichocarpa*, *Vitis vinifera*, *Cucumis sativus*, *Oryza sativa* Japonica Group.

For more species homologues information, please contact tech support at [tech@phytoab.com](mailto:tech@phytoab.com).

## Application Example



1-3 is thylakoid membrane protein from *Arabidopsis thaliana* leaf containing 0.1 µg, 0.25 µg, and 0.5 µg of chlorophyll, respectively.

**Electrophoresis:** 15% SDS-Urea-PAGE

**Transfer:** blotting to NC (nitrocellulose) membrane for 1 h.

**Blocking:** 5% skim milk at RT or 4°C for 1 h.

**Primary antibody:** 1:2000 dilution overnight at 4°C.

**Secondary antibody:** 1:20000 dilution using Goat Anti-Rabbit IgG H&L (HRP) (Cat# PHY6000).

**Detection:** using chemiluminescence substrate and image were captured with CCD camera.