

Anti-PsaA subunit of Photosystem I, N-terminal antibody

Catalog: PHY0368

Product Information

Description:	Rabbit polyclonal antibody
Background:	Photosystem I (PSI) is a multisubunit complex that catalyses the final stage of the light reactions in chloroplasts. This protein complex has two main components forming its core complex, PsaA and PsaB. These two subunits bind most of the cofactors required for charge separation and electron transfer in PSI.
Synonyms:	PsaA, Photosystem I P700 chlorophyll a apoprotein A1
Immunogen:	KLH-conjugated synthetic peptide derived from N-terminal of PsaA in <i>Arabidopsis thaliana</i> ATCG00350.
Form:	Lyophilized
Quantity:	150 µg
Purification:	Protein A purified
Reconstitution:	Reconstitution with 150 µl of 0.01 M sterile PBS. "Note: please spin tube briefly prior to opening it to avoid any losses that might occur from lyophilized material adhering to the cap or sides of the tube".
Stability & Storage:	Use a manual defrost freezer and avoid repeated freeze-thaw cycles. 12 months from date of receipt, -20 to -70°C as supplied. 6 months, -20 to -70°C under sterile conditions after reconstitution. 1 month, 2 to 8°C under sterile conditions after reconstitution.
Shipping:	The product is shipped at 4°C. Upon receipt, store it immediately at the temperature recommended above.

Application Information

Recommended Dilution:	Western Blot (1:1000-1:2000) Note: Optimal dilutions/concentrations should be determined by the end user.
Expected/apparent MW:	83 / 57 kDa
Confirmed Reactivity:	<i>Arabidopsis thaliana</i>

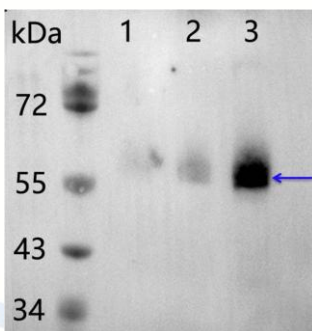
Research Use Only

Predicted Reactivity:

Among 25 analyzed species, the sequence of the synthetic peptide used for immunization is 100% homologues with the sequence in *Medicago truncatula*, *Chlamydomonas reinhardtii*, *Populus trichocarpa*, *Gossypium raimondii*, *Solanum tuberosum*, *Nicotiana tabacum*, *Spinacia oleracea*, *Brassica napus*, *Vitis vinifera*, *Cucumis sativus*, and 80-99% homologues with the sequence in *Glycine max*, *Physcomitrella patens*, *Oryza sativa Indica Group*, *Sorghum bicolor*, *Setaria viridis*, *Triticum aestivum*, *Panicum virgatum*, *Hordeum vulgare subsp. Vulgare*, *Synechocystis sp. PCC 6803*.

For more species homologues information, please contact tech support at tech@phytoab.com.

Application Example



1-3 is thylakoid membrane protein from *Arabidopsis thaliana* leaf containing 0.1 µg, 0.25 µg, and 0.5 µg of chlorophyll, respectively.

Electrophoresis: 15% SDS-Urea-PAGE

Transfer: blotting to NC (nitrocellulose) membrane for 1 h.

Blocking: 5% skim milk at RT or 4°C for 1 h.

Primary antibody: 1:2000 dilution overnight at 4°C.

Secondary antibody: 1:20000 dilution using Goat Anti-Rabbit IgG H&L (HRP) (Cat# PHY6000).

Detection: using chemiluminescence substrate and image were captured with CCD camera.