

Anti-D1 subunit of Photosystem II, N-terminal antibody

Catalog: PHY0363

Product Information

Description:	Rabbit polyclonal antibody
Background:	The D1 protein of Photosystem II (PSII), encoded by the <i>PsbA</i> genes, is an indispensable component of oxygenic photosynthesis. Due to strongly oxidative chemistry of PSII water splitting, the D1 protein is prone to constant photodamage requiring its replacement, whereas most of the other PSII subunits remain ordinarily undamaged.
Synonyms:	PsbA, 32 kDa thylakoid membrane protein, Photosystem II protein D1
Immunogen:	KLH-conjugated synthetic peptide derived from N-terminal of D1 subunit in <i>Arabidopsis thaliana</i> ATCG00020.
Form:	Lyophilized
Quantity:	150 µg
Purification:	Protein A purified
Reconstitution:	Reconstitution with 150 µl of 0.01 M sterile PBS. "Note: please spin tube briefly prior to opening it to avoid any losses that might occur from lyophilized material adhering to the cap or sides of the tube".
Stability & Storage:	Use a manual defrost freezer and avoid repeated freeze-thaw cycles. 12 months from date of receipt, -20 to -70°C as supplied. 6 months, -20 to -70°C under sterile conditions after reconstitution. 1 month, 2 to 8°C under sterile conditions after reconstitution.
Shipping:	The product is shipped at 4°C. Upon receipt, store it immediately at the temperature recommended above.

Application Information

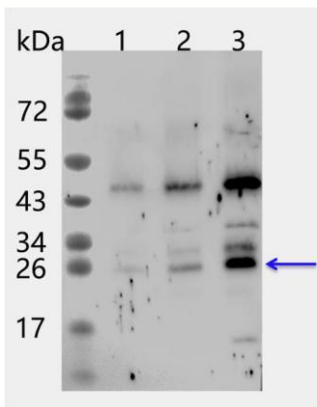
Recommended Dilution:	Western Blot (1:1000-1:2000) Note: Optimal dilutions/concentrations should be determined by the end user.
Expected/apparent MW:	39 / 26 kDa
Confirmed Reactivity:	<i>Arabidopsis thaliana</i>
Predicted Reactivity:	Among 25 analyzed species, the sequence of the synthetic peptide

Research Use Only

used for immunization is 100% homologues with the sequence in *Vitis vinifera*, *Glycine max*, *Nicotiana tabacum*, *Populus trichocarpa*, *Brassica napus*, *Cucumis sativus*, and 80-99% homologues with the sequence in *Medicago truncatula f. tricycle*, *Sorghum bicolor*, *Zea mays*, *Triticum aestivum*, *Oryza sativa Japonica Group*, *Hordeum vulgare subsp. Vulgare*, *Physcomitrella patens*.

For more species homologues information, please contact tech support at tech@phytoab.com.

Application Example



1-3 is thylakoid membrane protein from *Arabidopsis thaliana* leaf containing 0.1 µg, 0.25 µg, and 0.5 µg of chlorophyll, respectively.

Electrophoresis: 15% SDS-Urea-PAGE

Transfer: blotting to NC (nitrocellulose) membrane for 1h.

Blocking: 5% skim milk at RT or 4°C for 1h.

Primary antibody: 1:1000 dilution overnight at 4°C.

Secondary antibody: 1:20000 dilution using Goat Anti-Rabbit IgG H&L (HRP) (Cat# PHY6000).

Detection: using chemiluminescence substrate and image were captured with CCD camera.