

# Anti-PsbE subunit of Photosystem II, C-terminal antibody

Catalog: PHY0124A

## Product Information

<b>Description:</b>	Rabbit polyclonal antibody
<b>Background:</b>	PsbE subunit of PSII is also called cytochrome b559 $\alpha$ . It is a small subunit of PSII and localized in the PSII reaction center. This subunit may play a protective role by acting as an electron acceptor or electron donor.
<b>Synonyms:</b>	PsbE, PHOTOSYSTEM II REACTION CENTER PROTEIN E, Cyt b559 $\alpha$
<b>Immunogen:</b>	KLH-conjugated synthetic peptide derived from C-terminal of PsbE in <i>Arabidopsis thaliana</i> ATCG00580.
<b>Form:</b>	Lyophilized
<b>Quantity:</b>	150 $\mu$ g
<b>Purification:</b>	Immunogen affinity purified
<b>Reconstitution:</b>	Reconstitution with 150 $\mu$ l of 0.01 M sterile PBS. "Note: please spin tube briefly prior to opening it to avoid any losses that might occur from lyophilized material adhering to the cap or sides of the tube".
<b>Stability &amp; Storage:</b>	Use a manual defrost freezer and avoid repeated freeze-thaw cycles. 12 months from date of receipt, -20 to -70 $^{\circ}$ C as supplied. 6 months, -20 to -70 $^{\circ}$ C under sterile conditions after reconstitution. 1 month, 2 to 8 $^{\circ}$ C under sterile conditions after reconstitution.
<b>Shipping:</b>	The product is shipped at 4 $^{\circ}$ C. Upon receipt, store it immediately at the temperature recommended above.

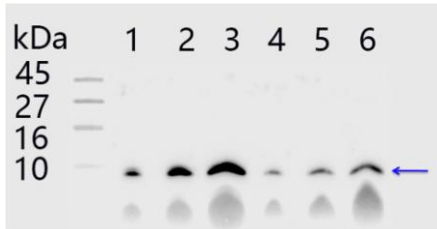
## Application Information

<b>Recommended Dilution:</b>	Western Blot (1:1000-1:2000) Note: Optimal dilutions/concentrations should be determined by the end user.
<b>Expected/apparent MW:</b>	9.4 / 9.4 kDa
<b>Confirmed Reactivity:</b>	<i>Arabidopsis thaliana</i>
<b>Predicted Reactivity:</b>	Among 25 analyzed species, the sequence of the synthetic peptide used for immunization is 100% homologues with the sequence in

Research Use Only

*Medicago truncatula*, *Spinacia oleracea*, *Oryza sativa Indica Group*, *Glycine max*, *Physcomitrella patens*, and 80-99% homologues with the sequence in *Triticum aestivum*, *Chlamydomonas reinhardtii*. For more species homologues information, please contact tech support at [tech@phytoab.com](mailto:tech@phytoab.com).

## Application Example



1-3 is thylakoid membrane protein from WT of *Arabidopsis thaliana* leaf containing 1  $\mu$ g, 2  $\mu$ g, and 5  $\mu$ g of chlorophyll, respectively.

4-6 is thylakoid membrane protein from PSII mutant of *Arabidopsis thaliana* leaf containing 1  $\mu$ g, 2  $\mu$ g, and 5  $\mu$ g of

chlorophyll, respectively.

**Electrophoresis:** Tricine-SDS-PAGE

**Transfer:** blotting to NC (nitrocellulose) membrane for 1 h.

**Blocking:** 5% skim milk at RT or 4°C for 1 h.

**Primary antibody:** 1:1000 dilution overnight at 4°C.

**Secondary antibody:** 1:20000 dilution using Goat Anti-Rabbit IgG H&L (HRP) (Cat# PHY6000).

**Detection:** using chemiluminescence substrate and image were captured with CCD camera.