

Anti-PsaK subunit of photosystem I antibody

Catalog: PHY0107A

Product Information

Description:	Rabbit polyclonal antibody
Background:	Photosystem I (PSI) is a multisubunit complex that catalyses the final stage of the light reactions in chloroplasts. Plant photosystem I (PSI) consists of at least 18 different protein subunits and PsaK is a subunit with two transmembrane α -helices, which in cyanobacteria is located at the periphery of the complex. PsaK has a role in organizing the peripheral light-harvesting complexes on the core antenna of photosystem I.
Synonyms:	PsaK, Photosystem I reaction center subunit PsaK, chloroplastic, PSI-K, Photosystem I subunit K
Immunogen:	KLH-conjugated synthetic peptide of PsaK derived from <i>Arabidopsis thaliana</i> AT1G30380.
Form:	Lyophilized
Quantity:	150 μ g
Purification:	Immunogen affinity purified
Reconstitution:	Reconstitution with 150 μ l of 0.01 M sterile PBS. "Note: please spin tube briefly prior to opening it to avoid any losses that might occur from lyophilized material adhering to the cap or sides of the tube".
Stability & Storage:	Use a manual defrost freezer and avoid repeated freeze-thaw cycles. 12 months from date of receipt, -20 to -70°C as supplied. 6 months, -20 to -70°C under sterile conditions after reconstitution. 1 month, 2 to 8°C under sterile conditions after reconstitution.
Shipping:	The product is shipped at 4°C. Upon receipt, store it immediately at the temperature recommended above.

Application Information

Recommended Dilution:	Western Blot (1:1000-1:2000) Note: Optimal dilutions/concentrations should be determined by the end user.
Expected/apparent MW:	13 / 10 kDa

Research Use Only

Confirmed Reactivity:

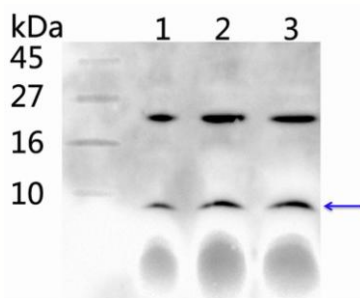
Arabidopsis thaliana

Predicted Reactivity:

Among 25 analyzed species, the sequence of the synthetic peptide used for immunization is 100% homologues with the sequence in *Zea mays*, *Oryza sativa Japonica Group*, *Brassica rapa*, *Brassica napus*, and 80-99% homologues with the sequence in *Medicago truncatula*, *Glycine max*, *Cucumis sativus*, *Nicotiana tabacum*, *Gossypium raimondii*, *Solanum tuberosum*, *Solanum lycopersicum*, *Populus trichocarpa*, *Vitis vinifera*.

For more species homologues information, please contact tech support at tech@phytoab.com.

Application Example



1-3 is thylakoid membrane protein from *Arabidopsis thaliana* leaf containing 2 µg, 4 µg, and 5 µg of chlorophyll, respectively.

Electrophoresis: Tricine-SDS-PAGE

Transfer: blotting to NC (nitrocellulose) membrane for 1 h.

Blocking: 5% skim milk at RT or 4°C for 1 h.

Primary antibody: 1:1000 dilution overnight at 4°C.

Secondary antibody: 1:20000 dilution using Goat Anti-Rabbit IgG H&L (HRP) (Cat# PHY6000).

Detection: using chemiluminescence substrate and image were captured with CCD camera.