

# Anti-His tag antibody

Catalog: PHY5010

## Product Information

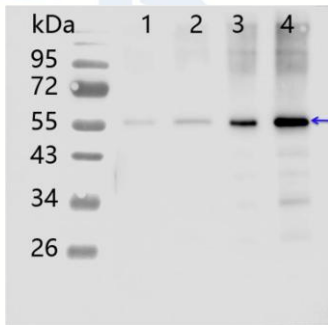
<b>Description:</b>	Mouse monoclonal antibody
<b>Synonyms:</b>	His
<b>Immunogen:</b>	Synthetic peptide of fragment (HHHHHH) His Tag.
<b>Form:</b>	Lyophilized
<b>Quantity:</b>	150 µg
<b>Purification:</b>	Protein A purified
<b>Reconstitution:</b>	Reconstitution with 150 µl of 0.01 M sterile PBS. "Note: please spin tube briefly prior to opening it to avoid any losses that might occur from lyophilized material adhering to the cap or sides of the tube".
<b>Stability &amp;</b>	Use a manual defrost freezer and avoid repeated freeze-thaw cycles.
<b>Storage:</b>	12 months from date of receipt, -20 to -70°C as supplied. 6 months, -20 to -70°C under sterile conditions after reconstitution. 1 month, 2 to 8°C under sterile conditions after reconstitution.
<b>Shipping:</b>	The product is shipped at 4°C. Upon receipt, store it immediately at the temperature recommended above.

## Application Information

<b>Recommended Dilution:</b>	Western Blot (1:1000-1:2000) Note: Optimal dilutions/concentrations should be determined by the end user.
<b>Confirmed Reactivity:</b>	This antibody specifically recognizes the 6X His-Tag at C-terminal or N-terminal of recombinant proteins, which can be used to detect His-Tag fusion protein of various expression vector.

Research Use Only

## Application Example



Lane 1: 0.5 ng His-tagged fusion protein.

Lane 2: 1 ng His-tagged fusion protein.

Lane 3: 2.5 ng His-tagged fusion protein.

Lane 4: 5 ng His-tagged fusion protein.

**Electrophoresis:** 12% SDS-PAGE

**Transfer:** blotting to NC (nitrocellulose) membrane for 1 h.

**Blocking:** 5% skim milk at RT or 4°C for 1 h.

**Primary antibody:** 1:1000 dilution overnight at 4°C.

**Secondary antibody:** 1:5000 dilution using Goat Anti-Mouse IgG H&L (HRP) (Cat# PHY6006).

**Detection:** using chemiluminescence substrate and image were captured with CCD camera.