

Anti-PsbH subunit of Photosystem II, N-terminal antibody

Catalog: PHY0610S

Product Information

Description:	Rabbit polyclonal antibody
Background:	PsbH is an 8-kD phosphoprotein in the Photosystem II oxygen evolving core. The exact molecular function of PsbH has not been determined but it may play a role in mediating electron transfer between the secondary quinone acceptors, QA and QB.
Synonyms:	PsbH, PHOTOSYSTEM II REACTION CENTER PROTEIN H
Immunogen:	KLH-conjugated synthetic peptide derived from N-terminal of PsbH in <i>Arabidopsis thaliana</i> ATCG00710.
Form:	Lyophilized
Quantity:	150 µg
Purification:	Serum
Reconstitution:	Reconstitution with 150 µl of sterile water. "Note: please spin tube briefly prior to opening it to avoid any losses that might occur from lyophilized material adhering to the cap or sides of the tube".
Stability & Storage:	Use a manual defrost freezer and avoid repeated freeze-thaw cycles. 12 months from date of receipt, -20 to -70°C as supplied. 6 months, -20 to -70°C under sterile conditions after reconstitution. 1 month, 2 to 8°C under sterile conditions after reconstitution.
Shipping:	The product is shipped at 4°C. Upon receipt, store it immediately at the temperature recommended above.

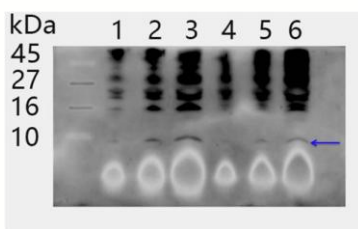
Application Information

Recommended Dilution:	Western Blot (1:1000-1:2000) Note: Optimal dilutions/concentrations should be determined by the end user.
Expected/apparent MW:	7.7 / 7.7 kDa
Confirmed Reactivity:	<i>Arabidopsis thaliana</i>
Predicted Reactivity:	Among 25 analyzed species, the sequence of the synthetic peptide

Research Use Only

used for immunization is 100% homologues with the sequence in *Medicago truncatula*, *Brassica napus*, *Gossypium raimondii*, *Glycine max*, *Cucumis sativus*, *Zea mays*, *Oryza sativa Japonica Group*, *Triticum aestivum*, *Hordeum vulgare subsp. Vulgare*, *Nicotiana tabacum*, *Populus trichocarpa*, *Physcomitrella patens*, *Spinacia oleracea*, *Vitis vinifera*, and 80-99% homologues with the sequence in *Synechocystis sp. PCC 6803*, *Chlamydomonas reinhardtii*. For more species homologues information, please contact tech support at tech@phytoab.com.

Application Example



1-3 is thylakoid membrane protein from WT of *Arabidopsis thaliana* leaf containing 1 µg, 2 µg, and 5 µg of chlorophyll, respectively.

4-6 is thylakoid membrane protein from PSII mutant of *Arabidopsis thaliana* leaf containing 1 µg, 2 µg, and 5 µg of chlorophyll, respectively.

Electrophoresis: Tricine-SDS-PAGE

Transfer: blotting to NC (nitrocellulose) membrane for 1 h.

Blocking: 5% skim milk at RT or 4°C for 1 h.

Primary antibody: 1:1000 dilution overnight at 4°C.

Secondary antibody: 1:20000 dilution using Goat Anti-Rabbit IgG H&L (HRP) (Cat# PHY6000).

Detection: using chemiluminescence substrate and image were captured with CCD camera.