

# Anti-Lhcb5 protein of LHCII antibody

Catalog: PHY0667S

## Product Information

<b>Description:</b>	Rabbit polyclonal antibody
<b>Background:</b>	The light-harvesting complex (LHC) functions as a light receptor; it captures and delivers excitation energy to photosystem. The minor light-harvesting complexes CP24, CP26 (Lhcb5), and CP29 have been proposed to play a key role in the zeaxanthin (Zx)-dependent high light-induced regulation (NPQ) of excitation energy in higher plants.
<b>Synonyms:</b>	Lhcb5, LIGHT HARVESTING COMPLEX OF PHOTOSYSTEM II 5
<b>Immunogen:</b>	KLH-conjugated synthetic peptide of Lhcb5 derived from <i>Arabidopsis thaliana</i> AT4G10340.
<b>Form:</b>	Lyophilized
<b>Quantity:</b>	150 µg
<b>Purification:</b>	Serum
<b>Reconstitution:</b>	Reconstitution with 150 µl of sterile water. "Note: please spin tube briefly prior to opening it to avoid any losses that might occur from lyophilized material adhering to the cap or sides of the tube".
<b>Stability &amp; Storage:</b>	Use a manual defrost freezer and avoid repeated freeze-thaw cycles. 12 months from date of receipt, -20 to -70°C as supplied. 6 months, -20 to -70°C under sterile conditions after reconstitution. 1 month, 2 to 8°C under sterile conditions after reconstitution.
<b>Shipping:</b>	The product is shipped at 4°C. Upon receipt, store it immediately at the temperature recommended above.

## Application Information

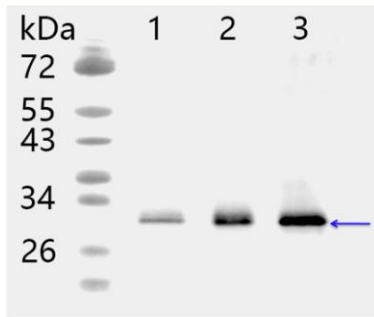
<b>Recommended Dilution:</b>	Western Blot (1:1000-1:2000) Note: Optimal dilutions/concentrations should be determined by the end user.
<b>Expected/apparent MW:</b>	30 / 29 kDa
<b>Confirmed Reactivity:</b>	<i>Arabidopsis thaliana</i>
<b>Predicted Reactivity:</b>	Among 25 analyzed species, the sequence of the synthetic peptide

Research Use Only

used for immunization is 100% homologues with the sequence in *Nicotiana tabacum*, *Populus trichocarpa*.

For more species homologues information, please contact tech support at [tech@phytoab.com](mailto:tech@phytoab.com).

## Application Example



**PHY0667S**

1-3 is thylakoid membrane protein from *Arabidopsis thaliana* leaf containing 0.05 µg, 0.1 µg, and 0.25 µg of chlorophyll, respectively.

**Electrophoresis:** 15% SDS-Urea-PAGE

**Transfer:** blotting to NC (nitrocellulose) membrane for 1 h.

**Blocking:** 5% skim milk at RT or 4°C for 1 h.

**Primary antibody:** 1:2000 dilution overnight at 4°C.

**Secondary antibody:** 1:20000 dilution using Goat Anti-Rabbit IgG H&L (HRP) (Cat# PHY6000).

**Detection:** using chemiluminescence substrate and image were captured with CCD camera.