

# Anti-Gamma subunit of chloroplast ATP synthase antibody

Catalog: PHY0490

## Product Information

<b>Description:</b>	Rabbit polyclonal antibody
<b>Background:</b>	<i>Arabidopsis thaliana</i> has two genes ( <i>atpC1</i> , <i>atpC2</i> ) coding for gamma subunits of chloroplast ATP synthase. The <i>atpC1</i> and <i>atpC2</i> were cloned and sequenced.
<b>Synonyms:</b>	AtpC
<b>Immunogen:</b>	KLH-conjugated synthetic peptide of AtpC1 derived from <i>Arabidopsis thaliana</i> AT4G04640.
<b>Form:</b>	Lyophilized
<b>Quantity:</b>	150 µg
<b>Purification:</b>	Protein A purified
<b>Reconstitution:</b>	Reconstitution with 150 µl of 0.01 M sterile PBS. "Note: please spin tube briefly prior to opening it to avoid any losses that might occur from lyophilized material adhering to the cap or sides of the tube".
<b>Stability &amp; Storage:</b>	Use a manual defrost freezer and avoid repeated freeze-thaw cycles. 12 months from date of receipt, -20 to -70°C as supplied. 6 months, -20 to -70°C under sterile conditions after reconstitution. 1 month, 2 to 8°C under sterile conditions after reconstitution.
<b>Shipping:</b>	The product is shipped at 4°C. Upon receipt, store it immediately at the temperature recommended above.

## Application Information

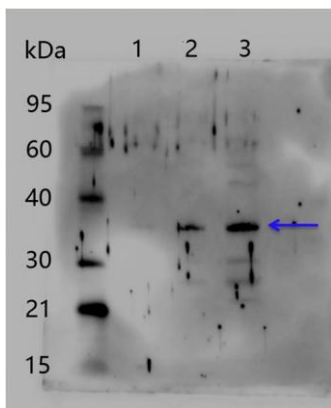
<b>Recommended Dilution:</b>	Western Blot (1:1000-1:2000) Note: Optimal dilutions/concentrations should be determined by the end user.
<b>Expected/apparent MW:</b>	41 / 36 kDa
<b>Confirmed Reactivity:</b>	<i>Arabidopsis thaliana</i>
<b>Predicted Reactivity:</b>	Among 25 analyzed species, the sequence of the synthetic peptide used for immunization is 100% homologues with the sequence in

Research Use Only

*Brassica rapa subsp. Chinensis*, and 80-99% homologues with the sequence in *Populus trichocarpa*, *Medicago truncatula*, *Nicotiana tabacum*, *Glycine max*, *Zea mays*.

For more species homologues information, please contact tech support at [tech@phytoab.com](mailto:tech@phytoab.com).

## Application Example



1-3 is thylakoid membrane protein from *Arabidopsis thaliana* leaf containing 0.1 µg, 0.25 µg, and 0.5 µg of chlorophyll, respectively.

**Electrophoresis:** 15% SDS-Urea-PAGE

**Transfer:** blotting to NC (nitrocellulose) membrane for 1 h.

**Blocking:** 5% skim milk at RT or 4°C for 1 h.

**Primary antibody:** 1:1000 dilution overnight at 4°C.

**Secondary antibody:** 1:20000 dilution using Goat Anti-Rabbit IgG H&L (HRP) (Cat# PHY6000).

**Detection:** using chemiluminescence substrate and image were captured with CCD camera.