

Anti-PsaO subunit of photosystem I antibody

Catalog: PHY0648S

Product Information

Description:	Rabbit polyclonal antibody
Background:	PsaO has two transmembrane helices and a calculated mass of 10104 Da. PsaO is involved in the balancing of excitation energy between the two photosystems I (PSI) and II (PSII).
Synonyms:	PsaO, Photosystem I subunit O, PSI-O, PHOTOSYSTEM I SUBUNIT O, PSAO
Immunogen:	KLH-conjugated synthetic peptide of PsaO derived from <i>Arabidopsis thaliana</i> AT1G08380.
Form:	Lyophilized
Quantity:	150 µg
Purification:	Serum
Reconstitution:	Reconstitution with 150 µl of sterile water. "Note: please spin tube briefly prior to opening it to avoid any losses that might occur from lyophilized material adhering to the cap or sides of the tube".
Stability & Storage:	Use a manual defrost freezer and avoid repeated freeze-thaw cycles. 12 months from date of receipt, -20 to -70°C as supplied. 6 months, -20 to -70°C under sterile conditions after reconstitution. 1 month, 2 to 8°C under sterile conditions after reconstitution.
Shipping:	The product is shipped at 4°C. Upon receipt, store it immediately at the temperature recommended above.

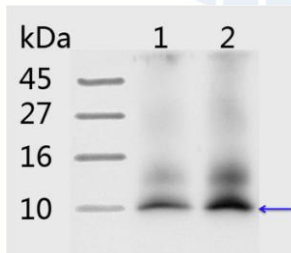
Application Information

Recommended Dilution:	Western Blot (1:1000-1:5000) Note: Optimal dilutions/concentrations should be determined by the end user.
Expected/apparent MW:	15 / 11 kDa
Confirmed Reactivity:	<i>Arabidopsis thaliana</i>
Predicted Reactivity:	Among 25 analyzed species, the sequence of the synthetic peptide used for immunization is 100% homologues with the sequence in <i>Medicago truncatula</i> .

Research Use Only

For more species homologues information, please contact tech support at tech@phytoab.com.

Application Example



1-2 is thylakoid membrane protein from WT of *Arabidopsis thaliana* leaf containing 0.1 µg, 0.25 µg of chlorophyll, respectively.

Electrophoresis: Tricine-SDS-PAGE

Transfer: blotting to NC (nitrocellulose) membrane for 1 h.

Blocking: 5% skim milk at RT or 4°C for 1 h.

PHY0648S

Primary antibody: 1:5000 dilution overnight at 4°C.

Secondary antibody: 1:20000 dilution using Goat Anti-Rabbit IgG H&L (HRP) (Cat# PHY6000).

Detection: using chemiluminescence substrate and image were captured with CCD camera.