

# Anti-Psbl subunit of Photosystem II antibody

Catalog: PHY0132A

## Product Information

<b>Description:</b>	Rabbit polyclonal antibody
<b>Background:</b>	Psbl is one of the components of the core complex of Photosystem II. Psbl is associated with the PSII reaction center protein D1 and is required for PSII stability and/or assembly. The molecular mass of Psbl is about 4.8 kDa.
<b>Synonyms:</b>	Psbl, PHOTOSYSTEM II REACTION CENTER PROTEIN I
<b>Immunogen:</b>	KLH-conjugated synthetic peptide of Psbl derived from <i>Arabidopsis thaliana</i> ATCG00080.
<b>Form:</b>	Lyophilized
<b>Quantity:</b>	150 µg
<b>Purification:</b>	Immunogen affinity purified
<b>Reconstitution:</b>	Reconstitution with 150 µl of 0.01 M sterile PBS. "Note: please spin tube briefly prior to opening it to avoid any losses that might occur from lyophilized material adhering to the cap or sides of the tube".
<b>Stability &amp; Storage:</b>	Use a manual defrost freezer and avoid repeated freeze-thaw cycles. 12 months from date of receipt, -20 to -70°C as supplied. 6 months, -20 to -70°C under sterile conditions after reconstitution. 1 month, 2 to 8°C under sterile conditions after reconstitution.
<b>Shipping:</b>	The product is shipped at 4°C. Upon receipt, store it immediately at the temperature recommended above.

## Application Information

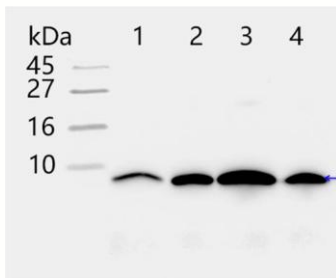
<b>Recommended Dilution:</b>	Western Blot (1:1000-1:2000) Note: Optimal dilutions/concentrations should be determined by the end user.
<b>Expected/apparent MW:</b>	4.2 kDa
<b>Confirmed Reactivity:</b>	<i>Arabidopsis thaliana</i> , <i>Chlamydomonas reinhardtii</i>
<b>Predicted Reactivity:</b>	Among 25 analyzed species, the sequence of the synthetic peptide used for immunization is 100% homologues with the sequence in <i>Medicago truncatula</i> , <i>Triticum aestivum</i> , <i>Nicotiana tabacum</i> , and

Research Use Only

80-99% homologues with the sequence in *Oryza sativa Japonica* Group, *Hordeum vulgare*, *Physcomitrella patens*, *Chlamydomonas reinhardtii*.

For more species homologues information, please contact tech support at [tech@phytoab.com](mailto:tech@phytoab.com).

## Application Example



1-3 is thylakoid membrane protein from WT of *Arabidopsis thaliana* leaf containing 0.01  $\mu\text{g}$ , 0.025  $\mu\text{g}$ , and 0.05  $\mu\text{g}$  of chlorophyll, respectively.

4 is thylakoid membrane protein from PSII mutant of *Arabidopsis thaliana* leaf containing 0.05  $\mu\text{g}$  of chlorophyll.

**Electrophoresis:** Tricine-SDS-PAGE

**Transfer:** blotting to NC (nitrocellulose) membrane for 1 h.

**Blocking:** 5% skim milk at RT or 4°C for 1 h.

**Primary antibody:** 1:2000 dilution overnight at 4°C.

**Secondary antibody:** 1:20000 dilution using Goat Anti-Rabbit IgG H&L (HRP) (Cat# PHY6000).

**Detection:** using chemiluminescence substrate and image were captured with CCD camera.