

# Anti-SNARE-interacting protein KEULE antibody

Catalog: PHY1753S

## Product Information

<b>Description:</b>	Rabbit polyclonal antibody
<b>Background:</b>	KEULE is a Sec1 protein and expressed throughout the plant. KEULE is required for cytokinesis. It is a regulator of vesicle trafficking involved in cytokinesis and root hair development.
<b>Synonyms:</b>	KEULE, KEU, SEC11
<b>Immunogen:</b>	KLH-conjugated synthetic peptide of KEULE derived from <i>Arabidopsis thaliana</i> AT1G12360.
<b>Form:</b>	Lyophilized
<b>Quantity:</b>	150 µg
<b>Purification:</b>	Serum
<b>Reconstitution:</b>	Peptide affinity form antibody available upon request at <a href="mailto:info@phytoab.com">info@phytoab.com</a> . Reconstitution with 150 µl of sterile water. "Note: please spin tube briefly prior to opening it to avoid any losses that might occur from lyophilized material adhering to the cap or sides of the tube".
<b>Stability &amp; Storage:</b>	Use a manual defrost freezer and avoid repeated freeze-thaw cycles. 12 months from date of receipt, -20 to -70°C as supplied. 6 months, -20 to -70°C under sterile conditions after reconstitution. 1 month, 2 to 8°C under sterile conditions after reconstitution.
<b>Shipping:</b>	The product is shipped at 4°C. Upon receipt, store it immediately at the temperature recommended above.

## Application Information

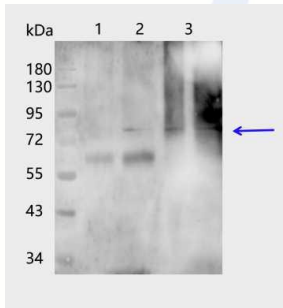
<b>Recommended Dilution:</b>	Western Blot (1:1000-1:2000) Note: Optimal dilutions/concentrations should be determined by the end user.
<b>Expected/apparent MW:</b>	75 kDa
<b>Confirmed Reactivity:</b>	<i>Arabidopsis thaliana</i>
<b>Predicted Reactivity:</b>	Among 25 analyzed species, the sequence of the synthetic peptide used for immunization is 80-99% homologues with the sequence in

Research Use Only

*Brassica napus*.

For more species homologues information, please contact tech support at [tech@phytoab.com](mailto:tech@phytoab.com).

## Application Example



Lane 1: 40 µg total protein from *Arabidopsis thaliana* leaf.

Lane 2: 80 µg total protein from *Arabidopsis thaliana* leaf.

Lane 3: 50 µg total protein from *Arabidopsis thaliana* flower.

Lane 4: 100 µg total protein from *Arabidopsis thaliana* flower.

**Electrophoresis:** 10% SDS-PAGE

**Transfer:** blotting to NC (nitrocellulose) membrane for 1 h.

**PHY1753S**

**Blocking:** 5% skim milk at RT or 4°C for 1 h.

**Primary antibody:** 1:1000 dilution overnight at 4°C.

**Secondary antibody:** 1:10000 dilution using Goat Anti-Rabbit IgG H&L(HRP) (Cat# PHY6000)

**Detection:** using chemiluminescence substrate and image were captured with CCD camera.