

Anti-Phosphoserine aminotransferase 1/2, chloroplastic antibody

Catalog: PHY2299S

Product Information

Description:	Rabbit polyclonal antibody
Background:	Phosphoserine aminotransferase 1/2 is involved in the plastidial phosphorylated pathway of serine biosynthesis (PPSB). It catalyzes the reversible conversion of 3-phosphohydroxypyruvate to phosphoserine.
Synonyms:	PSAT1/2, PHOSPHOSERINE AMINOTRANSFERASE 1/2
Immunogen:	KLH-conjugated synthetic peptide derived from C-terminal section of PSAT1/2 protein in <i>Arabidopsis thaliana</i> AT4G35630, AT2G17630.
Form:	Lyophilized
Quantity:	150 µg
Purification:	Serum Peptide affinity form antibody available upon request at info@phytoab.com .
Reconstitution:	Reconstitution with 150 µl of sterile water. "Note: please spin tube briefly prior to opening it to avoid any losses that might occur from lyophilized material adhering to the cap or sides of the tube".
Stability & Storage:	Use a manual defrost freezer and avoid repeated freeze-thaw cycles. 12 months from date of receipt, -20 to -70°C as supplied. 6 months, -20 to -70°C under sterile conditions after reconstitution. 1 month, 2 to 8°C under sterile conditions after reconstitution.
Shipping:	The product is shipped at 4°C. Upon receipt, store it immediately at the temperature recommended above.

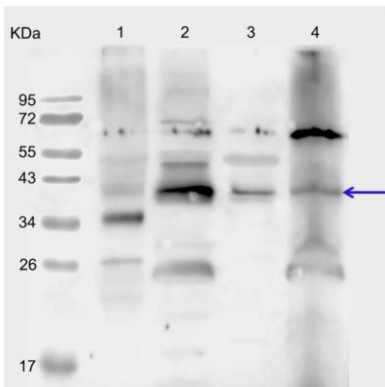
Application Information

Recommended Dilution:	Western Blot (1:1000-1:2000) Note: Optimal dilutions/concentrations should be determined by the end user.
Expected/apparent MW:	47 / 41 kDa
Confirmed Reactivity:	<i>Arabidopsis thaliana</i>
Predicted Reactivity:	Among 25 analyzed species, the sequence of the synthetic peptide

Research Use Only

used for immunization is 100% homologues with the sequence in *Brassica napus*, and 80-99% homologues with the sequence in *Glycine max*, *Medicago truncatula*, *Populus trichocarpa*, *Vitis vinifera*. For more species homologues information, please contact tech support at tech@phytoab.com.

Application Example



Lane 1: 20 µg total protein from *Arabidopsis thaliana* leaf.

Lane 2: Thylakoid membrane protein from *Arabidopsis thaliana* leaf containing 5 µg of chlorophyll.

Lane 3: 12 µg stromal protein from *Arabidopsis thaliana* leaf.

Lane 4: 10 µl total chloroplast protein from *Arabidopsis thaliana* leaf.

Electrophoresis: 15% SDS-PAGE

Transfer: blotting to NC (nitrocellulose) membrane for 1 h.

Blocking: 5% skim milk at RT or 4°C for 1 h.

Primary antibody: 1:1000 dilution overnight at 4°C.

PHY2299S

Secondary antibody: 1:10000 dilution using Goat Anti-Rabbit IgG H&L(HRP) (Cat# PHY6000)

Detection: using chemiluminescence substrate and image were captured with CCD camera.