

# Anti-20S proteasome $\beta$ subunit 1 antibody

Catalog: PHY2479S

## Product Information

<b>Description:</b>	Rabbit polyclonal antibody
<b>Background:</b>	The plant 20S proteasome $\beta$ subunit 1 (PBA1) was shown to have caspase-3-like activity using biotin-DEVD-fmk pull-down and activity assay in downregulated lines.
<b>Synonyms:</b>	PBA1
<b>Immunogen:</b>	KLH-conjugated synthetic peptide derived from N-terminal section of PBA1 protein in <i>Arabidopsis thaliana</i> AT4G31300.
<b>Form:</b>	Lyophilized
<b>Quantity:</b>	150 $\mu$ g
<b>Purification:</b>	Serum
<b>Reconstitution:</b>	Peptide affinity form antibody available upon request at <a href="mailto:info@phytoab.com">info@phytoab.com</a> . Reconstitution with 150 $\mu$ l of sterile water. "Note: please spin tube briefly prior to opening it to avoid any losses that might occur from lyophilized material adhering to the cap or sides of the tube".
<b>Stability &amp; Storage:</b>	Use a manual defrost freezer and avoid repeated freeze-thaw cycles. 12 months from date of receipt, -20 to -70°C as supplied. 6 months, -20 to -70°C under sterile conditions after reconstitution. 1 month, 2 to 8°C under sterile conditions after reconstitution.
<b>Shipping:</b>	The product is shipped at 4°C. Upon receipt, store it immediately at the temperature recommended above.

## Application Information

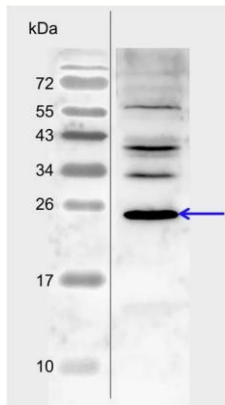
<b>Recommended Dilution:</b>	Western Blot (1:1000-1:5000) Note: Optimal dilutions/concentrations should be determined by the end user.
<b>Expected/apparent MW:</b>	25 / 26 kDa
<b>Confirmed Reactivity:</b>	<i>Arabidopsis thaliana</i>
<b>Predicted Reactivity:</b>	Among species analyzed, the sequence of the synthetic peptide used for immunization is 100% homologues with the sequence in <i>Nicotiana</i>

Research Use Only

*tabacum*, *Solanum lycopersicum*, *Solanum tuberosum*, *Brassica rapa*, *Cucumis sativus*, *Brassica napus*, *Medicago truncatula*, *Physcomitrium patens*, and 80-99% homologues with the sequence in *Spinacia oleracea*, *Vitis vinifera*, *Gossypium raimondii*, *Populus trichocarpa*.

For more species homologues information, please contact tech support at [tech@phytoab.com](mailto:tech@phytoab.com).

## Application Example



15  $\mu$ l cytosolic protein from *Arabidopsis thaliana* leaf.

**Electrophoresis:** 15% SDS-PAGE

**Transfer:** blotting to NC (nitrocellulose) membrane for 1 h.

**Blocking:** 5% skim milk at RT or 4°C for 1 h.

**Primary antibody:** 1:5000 dilution overnight at 4°C.

**Secondary antibody:** 1:10000 dilution using Goat Anti-Rabbit IgG H&L (HRP) (Cat# PHY6000).

**Detection:** using chemiluminescence substrate and image were captured with CCD

**PHY2479S**  
camera.