

Anti-PsaC subunit of photosystem I antibody

Catalog: PHY0055A

Product Information

Description:	Rabbit polyclonal antibody
Background:	Photosystem I (PSI) is a multisubunit complex that catalyses the final stage of the light reactions in chloroplasts. PsaC (ATCG01060) is a PSI subunit exposed to the stromal side of PSI and provides the ligands for two [4Fe-4S] clusters, FA and FB.
Synonyms:	PsaC, PSI-C
Immunogen:	KLH-conjugated synthetic peptide of PsaC derived from <i>Arabidopsis thaliana</i> ATCG01060.
Form:	Lyophilized
Quantity:	150 µg
Purification:	Immunogen affinity purified
Reconstitution:	Reconstitution with 150µl of 0.01M sterile PBS. "Note: please spin tube briefly prior to opening it to avoid any losses that might occur from lyophilized material adhering to the cap or sides of the tube".
Stability & Storage:	Use a manual defrost freezer and avoid repeated freeze-thaw cycles. 12 months from date of receipt, -20 to -70°C as supplied. 6 months, -20 to -70°C under sterile conditions after reconstitution. 1 month, 2 to 8°C under sterile conditions after reconstitution.
Shipping:	The product is shipped at 4°C. Upon receipt, store it immediately at the temperature recommended above.

Application Information

Recommended Dilution:	Western Blot (1:1000-1:2000) Note: Optimal dilutions/concentrations should be determined by the end user.
Expected/apparent MW:	9 kDa
Confirmed Reactivity:	<i>Arabidopsis thaliana</i> , <i>Oryza sativa</i>
Predicted Reactivity:	Among species analyzed, the sequence of the synthetic peptide used for immunization is 100% homologous with the sequence in <i>Brassica</i>

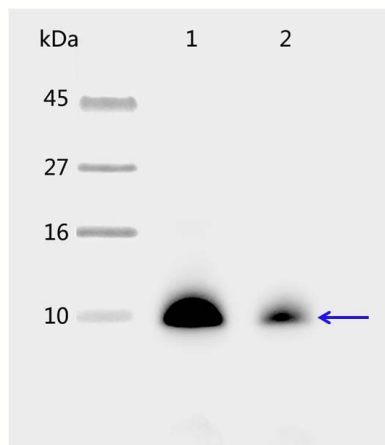
Research Use Only

rapa, Medicago truncatula, Solanum tuberosum, Zea mays, Spinacia oleracea, Triticum aestivum, Cucumis sativus, Sorghum bicolor, and 80-99% homologues with the sequence in Gossypium raimondii, Populus trichocarpa, Physcomitrella patens, Chlamydomonas reinhardtii.

For more species homologues information, please contact tech support at tech@phytoab.com.

Application Example

Example 1



PHY0055A

H&L (HRP) (Cat# PHY6000).

Detection: using chemiluminescence substrate and image were captured with CCD camera.

1 is thylakoid membrane protein from WT of *Arabidopsis thaliana* containing 1 µg of chlorophyll.

2 is thylakoid membrane protein from an Arabidopsis mutant with low accumulation of PSI containing 1 µg of chlorophyll.

Electrophoresis: Tricine-SDS-PAGE

Transfer: blotting to NC (nitrocellulose) membrane for 1 h.

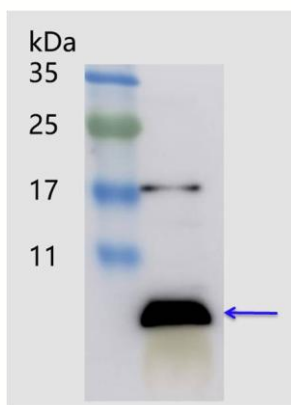
Blocking: 5% skim milk at RT or 4°C for 1 h.

Primary antibody: 1:2000 dilution overnight at 4°C.

Secondary antibody: 1:10000 dilution using Goat Anti-Rabbit IgG

Example 2

WB (1:500) results of total leaf proteins extracted from rice plants 21 days after germination with Anti-PsaC antibody.



Okita lab: <http://public.wsu.edu/~tokita/>.