

Anti-PsbTc subunit of Photosystem II antibody

Catalog: PHY0350A

Product Information

Description:	Rabbit polyclonal antibody
Background:	PsbTc subunit is encoded by the chloroplast genome and having a molecular mass of about 3.8 kDa. PsbTc can be identified as a low molecular mass component of the isolated CP47-RC subcomplex. Deletion of the psbT (c) gene results in increased sensitivity to photoinhibitory stress.
Synonyms:	PsbTc, YCF8
Immunogen:	KLH-conjugated synthetic peptide (15 aa from C terminal section) derived from <i>Arabidopsis thaliana</i> PsbTc (ATCG00690).
Form:	Lyophilized
Quantity:	150 µg
Purification:	Immunogen affinity purified
Reconstitution:	Reconstitution with 150 µl of 0.01 M sterile PBS. "Note: please spin tube briefly prior to opening it to avoid any losses that might occur from lyophilized material adhering to the cap or sides of the tube".
Stability & Storage:	Use a manual defrost freezer and avoid repeated freeze-thaw cycles. 12 months from date of receipt, -20 to -70°C as supplied. 6 months, -20 to -70°C under sterile conditions after reconstitution. 1 month, 2 to 8°C under sterile conditions after reconstitution.
Shipping:	The product is shipped at 4°C. Upon receipt, store it immediately at the temperature recommended above.

Application Information

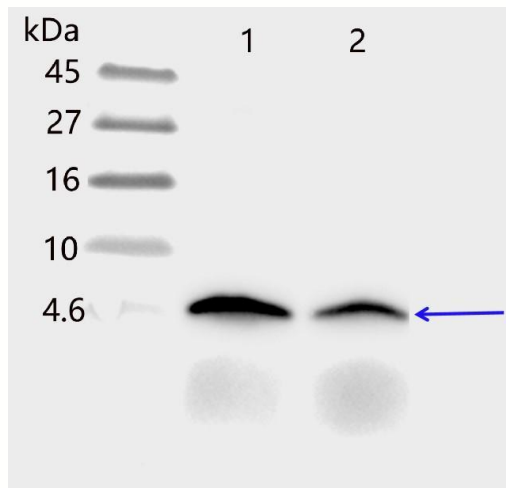
Recommended Dilution:	Western Blot (1:1000-1:2000) Note: Optimal dilutions/concentrations should be determined by the end user.
Expected/apparent MW:	4 kDa
Confirmed Reactivity:	<i>Arabidopsis thaliana</i>
Predicted Reactivity:	Among species analyzed, the sequence of the synthetic peptide used for immunization is 100% homologues with the sequence in <i>Spinacia</i>

Research Use Only

oleracea, and 80-99% homologues with the sequence in *Brassica napus*, *Gossypium raimondii*, *Setaria viridis*, *Zea mays*, *Nicotiana tabacum*, *Glycine max*, *Oryza sativa*, *Solanum lycopersicum*, *Medicago truncatula*, *Physcomitrium patens*.

For more species homologues information, please contact tech support at tech@phytoab.com.

Application Example



PHY0350A

1 is thylakoid membrane protein from WT of *Arabidopsis thaliana* containing 0.25 μ g of chlorophyll.

2 is thylakoid membrane protein from an *Arabidopsis* mutant with low accumulation of PSII containing 0.25 μ g of chlorophyll.

Electrophoresis: Tricine-SDS-PAGE

Transfer: blotting to NC (nitrocellulose) membrane for 1 h.

Blocking: 5% skim milk at RT or 4°C for 1 h.

Primary antibody: 1:2000 dilution overnight at 4°C.

Secondary antibody: 1:10000 dilution using Goat Anti-Rabbit IgG H&L (HRP) (Cat# PHY6000).

Detection: using chemiluminescence substrate and image were captured with CCD camera.