

Anti-BirA Antibody

Catalog: PHY6504S

Product Information

Description:	Rabbit polyclonal antibody
Background:	BirA acts both as a biotin-operon repressor and as the enzyme that synthesizes the corepressor, acetyl-CoA:carbon-dioxide ligase. This protein also activates biotin to form biotiny-5'-adenylate and transfers the biotin moiety to biotin-accepting proteins. TurboID and MiniTurbo are two engineered, promiscuous mutants of biotin ligase, BirA, which can label near-neighbor proteins with biotin substrate.
Synonyms:	BirA
Immunogen:	KLH-conjugated synthetic peptide (19 aa from Central section) derived from mutated BirA protein (P06709) and TurboID/MiniTurbo which is referenced from the literature: Branon et al., 2018, DOI: 10.1038/nbt.4201.
Form:	Lyophilized
Quantity:	150 µg
Purification:	Serum
Reconstitution:	Peptide affinity form antibody available upon request at info@phytoab.com . Reconstitution with 150 µl of sterile water. "Note: please spin tube briefly prior to opening it to avoid any losses that might occur from lyophilized material adhering to the cap or sides of the tube".
Stability &Storage:	Use a manual defrost freezer and avoid repeated freeze-thaw cycles. 12 months from date of receipt, -20 to -70°C as supplied. 6 months, -20 to -70°C under sterile conditions after reconstitution. 1 month, 2 to 8°C under sterile conditions after reconstitution.
Shipping:	The product is shipped at 4°C. Upon receipt, store it immediately at the temperature recommended above.

Application Information

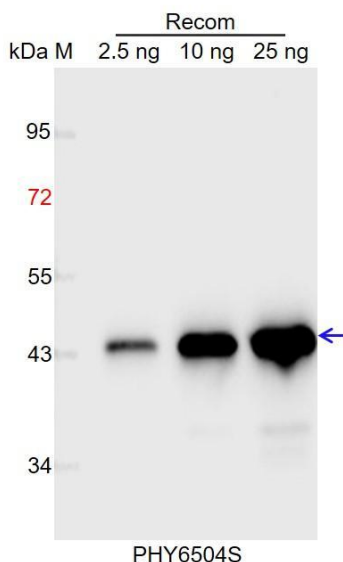
Recommended Dilution:	Western Blot (1:1000-1:2000) Note: Optimal dilutions/concentrations should be determined by the end user.
------------------------------	--

Research Use Only

Expected / apparent MW: 35 kDa (TurboID / BirA); 28 kDa (MiniTurbo)

Predicted Reactivity: For more species homologues information, please contact tech support at tech@phytoab.com.

Application Example



Recom: 2.5 ng, 10 ng and 25 ng recombinant protein containing the peptide for immunization and having a molecular mass of 43 kDa.

Electrophoresis: 12% SDS-PAGE

Transfer: blotting to NC (nitrocellulose) membrane for 1 h.

Blocking: 5% skim milk at RT or 4°C for 1 h.

Primary antibody: 1:1000 dilution overnight at 4°C.

Secondary antibody: 1:10000 dilution using Goat Anti-Rabbit IgG H&L (HRP) (Cat# PHY6000).

Detection: using chemiluminescence substrate and image were captured with CCD camera.