

# Anti-Serine/threonine-protein kinase SRK2A/B, N-terminal antibody

Catalog: PHY0741A

## Product Information

<b>Description:</b>	Rabbit polyclonal antibody
<b>Background:</b>	SRK2A/B is a member of SNF1-related protein kinases (SnRK2) whose activity is activated by ionic (salt) and non-ionic (mannitol) osmotic stress.
<b>Synonyms:</b>	SNRK2.4/10, SNRK2-4/10, SNF1-RELATED PROTEIN KINASE 2.4/10, SRK2A/B, SUCROSE NONFERMENTING 1-RELATED PROTEIN KINASE 2-4/10
<b>Immunogen:</b>	KLH-conjugated synthetic peptide (11 aa from N terminal section) derived from <i>Arabidopsis thaliana</i> SNRK2.4 (AT1G10940) and SNRK2.10 (AT1G60940).
<b>Form:</b>	Lyophilized
<b>Quantity:</b>	150 µg
<b>Purification:</b>	Immunogen affinity purified
<b>Reconstitution:</b>	Reconstitution with 150 µl of sterile 1XPBS (PH=7.4). "Note: please spin tube briefly prior to opening it to avoid any losses that might occur from lyophilized material adhering to the cap or sides of the tube".
<b>Stability &amp; Storage:</b>	Use a manual defrost freezer and avoid repeated freeze-thaw cycles. 12 months from date of receipt, -20 to -70°C as supplied. 6 months, -20 to -70°C under sterile conditions after reconstitution. 1 month, 2 to 8°C under sterile conditions after reconstitution.
<b>Shipping:</b>	The product is shipped at 4°C. Upon receipt, store it immediately at the temperature recommended above.

## Application Information

<b>Recommended Dilution:</b>	Western Blot (1:1000-1:2000) Note: Optimal dilutions/concentrations should be determined by the end user.
<b>Expected / apparent MW:</b>	42 kDa
<b>Confirmed Reactivity:</b>	<i>Arabidopsis thaliana</i>
<b>Predicted Reactivity:</b>	Among species analyzed, the sequence of the synthetic peptide used for immunization is 100% homologues with the sequence in

Research Use Only

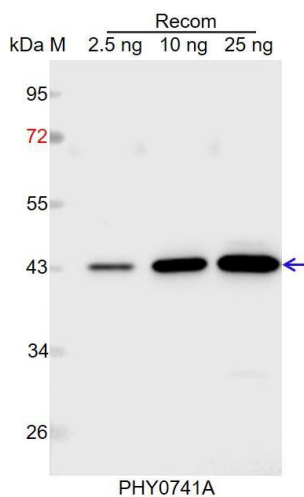
*Gossypium raimondii*, *Brassica rapa*, *Glycine max*, *Nicotiana tabacum*, *Brassica napus*, and 80-99% homologues with the sequence in *Solanum lycopersicum*, *Solanum tuberosum*, *Vitis vinifera*, *Spinacia oleracea*, *Sorghum bicolor*, *Medicago truncatula*, *Triticum aestivum*, *Populus trichocarpa*, *Panicum virgatum*, *Oryza sativa*, *Zea mays*.

The sequence of the synthetic peptide used for immunization is 82% (9/11) homologues with the sequence in SnRK2.5 (AT5G63650) and SnRK2.6 (AT4G33950).

For more species homologues information, please contact tech support at [tech@phytoab.com](mailto:tech@phytoab.com).

## Application Example

### Example 1



Recom: 2.5 ng, 10 ng and 25 ng recombinant protein containing the peptide for immunization and having a molecular mass of 43 kDa.

**Electrophoresis:** 12% SDS-PAGE

**Transfer:** blotting to NC (nitrocellulose) membrane for 1 h.

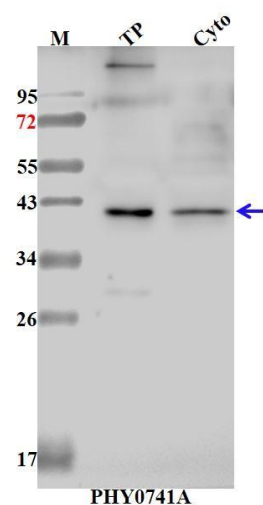
**Blocking:** 5% skim milk at RT or 4°C for 1 h.

**Primary antibody:** 1:1000 dilution overnight at 4°C.

**Secondary antibody:** 1:10000 dilution using Goat Anti-Rabbit IgG H&L (HRP) (Cat# PHY6000).

**Detection:** using chemiluminescence substrate and image were captured with CCD camera.

### Example 2



TP: 18 µg total protein from *Arabidopsis thaliana*.

Cyto: 10 µg cytosolic protein from *Arabidopsis thaliana*.

**Electrophoresis:** 15% SDS-PAGE

**Transfer:** blotting to NC (nitrocellulose) membrane for 1 h.

**Blocking:** 5% skim milk at RT or 4°C for 1 h.

**Primary antibody:** 1:1000 dilution overnight at 4°C.

**Secondary antibody:** 1:10000 dilution using Goat Anti-Rabbit IgG H&L (HRP) (Cat# PHY6000).

**Detection:** using chemiluminescence substrate and image were captured with CCD camera.