

Anti-Beta-amylase 5 antibody

Catalog: PHY2279A

Product Information

Description:	Rabbit polyclonal antibody
Background:	The Arabidopsis (<i>Arabidopsis thaliana</i>) genome contains nine β -amylase (BAM) genes, some of which play important roles in starch hydrolysis. RAM1(BAM5) has beta-amylase activity. It is major cytosolic beta-amylase isoform in rosette leaves and inflorescences stems.
Synonyms:	RAM1, ARABIDOPSIS THALIANA BETA-AMYLASE, AT-BETA-AMY, ATBETA-AMY, BAM5, BETA-AMYLASE 5, BMY1, REDUCED BETA AMYLASE 1
Immunogen:	KLH-conjugated synthetic peptide (16 aa from Central section) derived from <i>Arabidopsis thaliana</i> RAM1 (AT4G15210).
Form:	Lyophilized
Quantity:	150 μ g
Purification:	Immunogen affinity purified
Reconstitution:	Reconstitution with 150 μ l of sterile 1XPBS (PH=7.4). "Note: please spin tube briefly prior to opening it to avoid any losses that might occur from lyophilized material adhering to the cap or sides of the tube".
Stability & Storage:	Use a manual defrost freezer and avoid repeated freeze-thaw cycles. 12 months from date of receipt, -20 to -70°C as supplied. 6 months, -20 to -70°C under sterile conditions after reconstitution. 1 month, 2 to 8°C under sterile conditions after reconstitution.
Shipping:	The product is shipped at 4°C. Upon receipt, store it immediately at the temperature recommended above.

Application Information

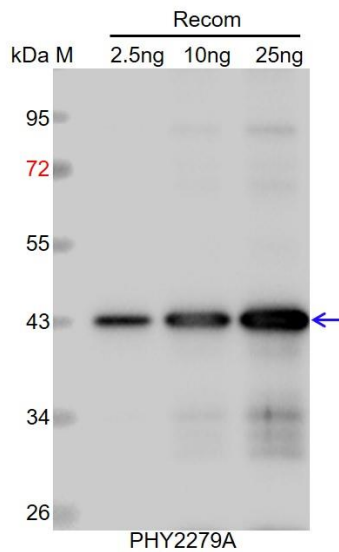
Recommended Dilution:	Western Blot (1:1000-1:2000) Note: Optimal dilutions/concentrations should be determined by the end user.
Expected / apparent MW:	56 kDa
Predicted Reactivity:	Among species analyzed, the sequence of the synthetic peptide used for immunization is 80-99% homologues with the sequence in <i>Sorghum</i>

Research Use Only

bicolor, *Oryza sativa*, *Triticum aestivum*, *Hordeum vulgare*, *Setaria viridis*, *Brassica rapa*, *Brassica napus*, *Panicum virgatum*, *Spinacia oleracea*, *Vitis vinifera*, *Zea mays*, *Gossypium raimondii*, *Glycine max*.

For more species homologues information, please contact tech support at tech@phytoab.com.

Application Example



Recom: 2.5 ng, 10 ng and 25 ng recombinant protein containing the peptide for immunization and having a molecular mass of 43 kDa.

Electrophoresis: 12% SDS-PAGE

Transfer: blotting to NC (nitrocellulose) membrane for 1 h.

Blocking: 5% skim milk at RT or 4°C for 1 h.

Primary antibody: 1:1000 dilution overnight at 4°C.

Secondary antibody: 1:10000 dilution using Goat Anti-Rabbit IgG H&L (HRP) (Cat# PHY6000).

Detection: using chemiluminescence substrate and image were captured with CCD camera.