

Anti-PHD finger protein ALFIN-LIKE 2 antibody

Catalog: PHY7804S

Product Information

Description:	Rabbit polyclonal antibody
Background:	is a member of the Alfin1-like family of nuclear-localized PHD (plant homeodomain) domain containing proteins. All AL proteins except AL3 bind to di- or trimethylated histone H3 (H3K4me3/2). Members of this family include: AT5G05610 (AL1), AT3G11200 (AL2), AT3G42790 (AL3), AT5G26210 (AL4), AT5G20510 (AL5), AT2G02470 (AL6), AT1G14510 (AL7).
Synonyms:	AL2, ALFIN-LIKE 2
Immunogen:	KLH-conjugated synthetic peptide (17 aa from Central section) derived from <i>Arabidopsis thaliana</i> AL2 (AT3G11200).
Form:	Lyophilized
Quantity:	150 µg
Purification:	Serum Peptide affinity form antibody available upon request at info@phytoab.com .
Reconstitution:	Reconstitution with 150 µl of sterile water. "Note: please spin tube briefly prior to opening it to avoid any losses that might occur from lyophilized material adhering to the cap or sides of the tube".
Stability & Storage:	Use a manual defrost freezer and avoid repeated freeze-thaw cycles. 12 months from date of receipt, -20 to -70°C as supplied. 6 months, -20 to -70°C under sterile conditions after reconstitution. 1 month, 2 to 8°C under sterile conditions after reconstitution.
Shipping:	The product is shipped at 4°C. Upon receipt, store it immediately at the temperature recommended above.

Application Information

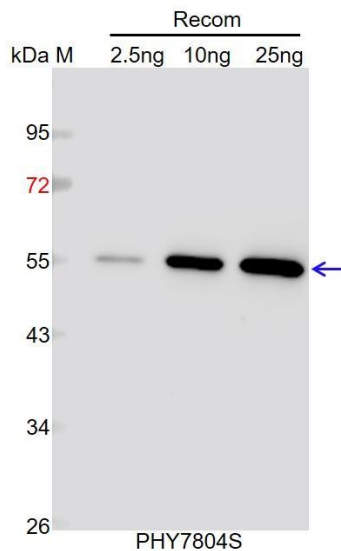
Recommended Dilution:	Western Blot (1:1000-1:2000) Note: Optimal dilutions/concentrations should be determined by the end user.
Expected / apparent MW:	28 kDa
Predicted Reactivity:	Among species analyzed, the sequence of the synthetic peptide used

Research Use Only

for immunization is 80-99% homologues with the sequence in *Brassica rapa*, *Brassica napus*, *Cucumis sativus*.

For more species homologues information, please contact tech support at tech@phytoab.com.

Application Example



Recom: 2.5 ng, 10 ng and 25 ng recombinant protein containing the peptide for immunization and having a molecular mass of 55 kDa.

Electrophoresis: 12% SDS-PAGE

Transfer: blotting to NC (nitrocellulose) membrane for 1 h.

Blocking: 5% skim milk at RT or 4°C for 1 h.

Primary antibody: 1:1000 dilution overnight at 4°C.

Secondary antibody: 1:10000 dilution using Goat Anti-Rabbit IgG H&L (HRP) (Cat# PHY6000).

Detection: using chemiluminescence substrate and image were captured with CCD camera.