

Anti-Catalase-3, C-terminal antibody

Catalog: PHY1534A

Product Information

Description:	Rabbit polyclonal antibody
Background:	Catalase is one of the most important antioxidant enzymes that catalyze the decomposition of H ₂ O ₂ . CAT3 has been found to interact with several proteins, such as nucleoside diphosphate kinase, NDK1 (AT4G09320), class 3 sucrose-nonfermenting 1-related kinase, SOS2 (AT5G35410), and LESION SIMULATING DISEASE1, LSD1 (AT4G20380).
Synonyms:	CAT3, ATCAT3, CATALASE 3, REPRESSOR OF GSNOR1, ROG1, SEN2, SENESENCE 2
Immunogen:	KLH-conjugated synthetic peptide (15 aa from C terminal section) derived from <i>Arabidopsis thaliana</i> CAT3 (AT1G20620).
Form:	Lyophilized
Quantity:	150 µg
Purification:	Immunogen affinity purified
Reconstitution:	Reconstitution with 150 µl of sterile 1×PBS (PH=7.4). "Note: please spin tube briefly prior to opening it to avoid any losses that might occur from lyophilized material adhering to the cap or sides of the tube".
Stability & Storage:	Use a manual defrost freezer and avoid repeated freeze-thaw cycles. 12 months from date of receipt, -20 to -70°C as supplied. 6 months, -20 to -70°C under sterile conditions after reconstitution. 1 month, 2 to 8°C under sterile conditions after reconstitution.
Shipping:	The product is shipped at 4°C. Upon receipt, store it immediately at the temperature recommended above.

Application Information

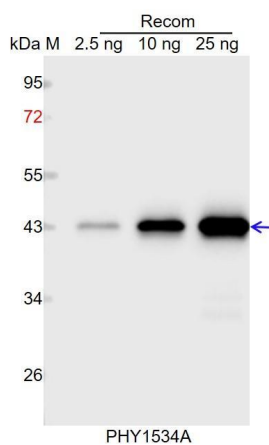
Recommended Dilution:	Western Blot (1:1000-1:2000) Note: Optimal dilutions/concentrations should be determined by the end user.
Expected / apparent MW:	57 kDa
Predicted Reactivity:	Among species analyzed, the sequence of the synthetic peptide used for immunization is 80-99% homologues with the sequence in

Research Use Only

Brassica rapa, Brassica napus, Cucumis sativus, Glycine max, Triticum aestivum, Hordeum vulgare, Medicago truncatula, Nicotiana tabacum, Solanum lycopersicum, Oryza sativa, Populus trichocarpa, Gossypium raimondii, Solanum tuberosum.

For more species homologues information, please contact tech support at tech@phytoab.com.

Application Example



Recom: 2.5 ng, 10 ng and 25 ng recombinant protein containing the peptide for immunization and having a molecular mass of 44 kDa.

Electrophoresis: 12% SDS-PAGE

Transfer: blotting to NC (nitrocellulose) membrane for 1 h.

Blocking: 5% skim milk at RT or 4°C for 1 h.

Primary antibody: 1:1000 dilution overnight at 4°C.

Secondary antibody: 1:10000 dilution using Goat Anti-Rabbit IgG H&L (HRP) (Cat# PHY6000).

Detection: using chemiluminescence substrate and image were captured with CCD camera.