

Anti-Protein TOPLESS antibody

Catalog: PHY3540A

Product Information

Description:	Rabbit polyclonal antibody
Background:	TPL is a protein with several WD40 repeats at the C-terminus and predicted protein-protein interaction domains at the N-terminus. Together with the TOPLESS-RELATED PROTEINS (TPRs), it is thought to be involved in transcriptional repression of root-promoting genes in the top half of the embryo during the transition stage of embryogenesis. It can also interact with IAA12 through the EAR domain of IAA12 and the CTLH domain of TPL. The ability of IAA12 to repress transcription is diminished in a <i>tpl-1</i> mutant background.
Synonyms:	TPL, TOPLESS, WSIP1, WUS-INTERACTING PROTEIN 1
Immunogen:	KLH-conjugated synthetic peptide (16 aa from C terminal section) derived from <i>Arabidopsis thaliana</i> TPL (AT1G15750).
Form:	Lyophilized
Quantity:	150 µg
Purification:	Immunogen Affinity Purified
Reconstitution:	Reconstitution with 150µl of sterile 1 × PBS (PH=7.4). "Note: please spin tube briefly prior to opening it to avoid any losses that might occur from lyophilized material adhering to the cap or sides of the tube".
Stability &	Use a manual defrost freezer and avoid repeated freeze-thaw cycles.
Storage:	12 months from date of receipt, -20 to -70°C as supplied. 6 months, -20 to -70°C under sterile conditions after reconstitution. 1 month, 2 to 8°C under sterile conditions after reconstitution.
Shipping:	The product is shipped at 4°C. Upon receipt, store it immediately at the temperature recommended above.

Application Information

Recommended Dilution:	Western Blot (1:1000-1:2000) Note: Optimal dilutions/concentrations should be determined by the end user.
Expected / apparent MW:	124 kDa

Research Use Only

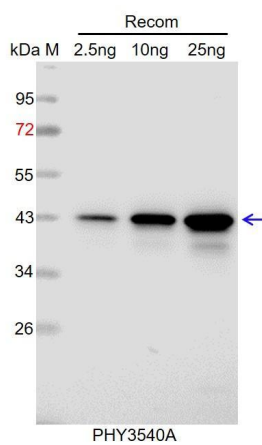
Predicted Reactivity:

Among species analyzed, the sequence of the synthetic peptide used for immunization is 80-99% homologues with the sequence in *Brassica rapa*, *Brassica napus*, *Gossypium raimondii*.

The sequence of the synthetic peptide used for immunization is 81% (13 /16) homologues with the sequence in TPR (AT1G80490).

For more species homologues information, please contact tech support at tech@phytoab.com.

Application Example



Recom: 2.5 ng, 10 ng and 25 ng recombinant protein containing the peptide for immunization and having a molecular mass of 43 kDa.

Electrophoresis: 12% SDS-PAGE

Transfer: blotting to NC (nitrocellulose) membrane for 1 h.

Blocking: 5% skim milk at RT or 4°C for 1 h.

Primary antibody: 1:1000 dilution overnight at 4°C.

Secondary antibody: 1:10000 dilution using Goat Anti-Rabbit IgG H&L (HRP) (Cat# PHY6000).

Detection: using chemiluminescence substrate and image were captured with CCD camera.