

Anti-Lhca6 protein of LHCI antibody

Catalog: PHY0470A

Product Information

Description:	Rabbit polyclonal antibody
Background:	The light-harvesting complex (LHC) functions as a light receptor, it captures and delivers excitation energy to photosystems with which it is closely associated. Lhca6 seems involved in the function of the photosystem I in low light conditions, when other LHCA proteins are less abundant. Required, together with LHCA5, for the formation of a full-size NAD(P)H dehydrogenase-photosystem I supercomplex (NDH-PSI) that triggers cyclic and chlororespiratory electron transport in chloroplast thylakoids, especially under stress conditions.
Synonyms:	Lhca6, LHCA6, LHCA2*1, PHOTOSYSTEM I LIGHT HARVESTING COMPLEX GENE 6
Immunogen:	KLH-conjugated synthetic peptide (16 aa from C terminal section) derived from <i>Arabidopsis thaliana</i> Lhca6 (AT1G19150).
Form:	Lyophilized
Quantity:	150 µg
Purification:	Immunogen affinity purified
Reconstitution:	Reconstitution with 150 µl of sterile 1XPBS (PH=7.4). "Note: please spin tube briefly prior to opening it to avoid any losses that might occur from lyophilized material adhering to the cap or sides of the tube".
Stability & Storage:	Use a manual defrost freezer and avoid repeated freeze-thaw cycles. 12 months from date of receipt, -20 to -70°C as supplied. 6 months, -20 to -70°C under sterile conditions after reconstitution. 1 month, 2 to 8°C under sterile conditions after reconstitution.
Shipping:	The product is shipped at 4°C. Upon receipt, store it immediately at the temperature recommended above.

Application Information

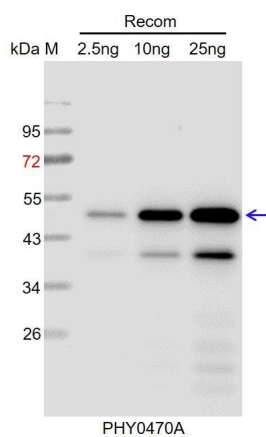
Recommended Dilution:	Western Blot (1:1000-1:2000) Note: Optimal dilutions/concentrations should be determined by the end user.
------------------------------	--

Research Use Only

Expected / apparent MW: 30 kDa

Predicted Reactivity: Among species analyzed, the sequence of the synthetic peptide used for immunization is 80-99% homologues with the sequence in *Brassica napus*, *Brassica rapa*, *Glycine max*.
For more species homologues information, please contact tech support at tech@phytoab.com.

Application Example



Recom: 2.5 ng, 10 ng and 25 ng recombinant protein containing the peptide for immunization and having a molecular mass of 50 kDa.

Electrophoresis: 12% SDS-PAGE

Transfer: blotting to NC (nitrocellulose) membrane for 1 h.

Blocking: 5% skim milk at RT or 4°C for 1 h.

Primary antibody: 1:1000 dilution overnight at 4°C.

Secondary antibody: 1:10000 dilution using Goat Anti-Rabbit IgG H&L (HRP) (Cat# PHY6000).

Detection: using chemiluminescence substrate and image were captured with CCD camera.