

Anti-Auxin response factor 7, C-terminal antibody

Catalog: PHY3694A

Product Information

Description:	Rabbit polyclonal antibody
Background:	IAA21 encodes an auxin-regulated transcriptional activator. Activates expression of IAA1 and IAA9 in the presence of auxin. Mutants affect blue light and gravitropic and auxin mediated growth responses. Together with AUX19, it is involved in the response to ethylene. In the <i>arf7 arf19</i> double mutant, several auxin-responsive genes (e.g. IAA5, LBD16, LBD29 and LBD33) are no longer upregulated by auxin.
Synonyms:	IAA21, ARF7, AUXIN RESPONSE FACTOR 7, BIP, BIPOSTO, IAA23, IAA25, INDOLE-3-ACETIC ACID INDUCIBLE 21, INDOLE-3-ACETIC ACID INDUCIBLE 23, INDOLE-3-ACETIC ACID INDUCIBLE 25, MASSUGU 1, MSG1, NON-PHOTOTROPIC HYPOCOTYL, NPH4, TIR5, TRANSPORT INHIBITOR RESPONSE 5
Immunogen:	KLH-conjugated synthetic peptide (16 aa from C terminal section) derived from <i>Arabidopsis thaliana</i> IAA21 (AT5G20730).
Form:	Lyophilized
Quantity:	150 µg
Purification:	Immunogen Affinity Purified
Reconstitution:	Reconstitution with 150 µl of sterile 1×PBS (PH=7.4). "Note: please spin tube briefly prior to opening it to avoid any losses that might occur from lyophilized material adhering to the cap or sides of the tube".
Stability &	Use a manual defrost freezer and avoid repeated freeze-thaw cycles.
Storage:	12 months from date of receipt, -20 to -70°C as supplied. 6 months, -20 to -70°C under sterile conditions after reconstitution. 1 month, 2 to 8°C under sterile conditions after reconstitution.
Shipping:	The product is shipped at 4°C. Upon receipt, store it immediately at the temperature recommended above.

Application Information

Recommended Dilution:	Western Blot (1:1000-1:2000) Note: Optimal dilutions/concentrations should be determined by the
------------------------------	--

Research Use Only

end user.

Expected / apparent MW:

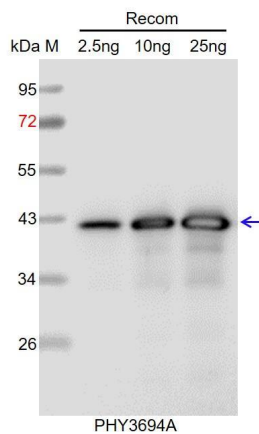
129 kDa

Predicted Reactivity:

Among species analyzed, the sequence of the synthetic peptide used for immunization is 100% homologues with the sequence in *Brassica napus*, *Brassica rapa*, and 80-99% homologues with the sequence in *Nicotiana tabacum*, *Solanum tuberosum*, *Glycine max*, *Medicago truncatula*, *Cucumis sativus*, *Gossypium raimondii*, *Populus trichocarpa*, *Solanum lycopersicum*.

For more species homologues information, please contact tech support at tech@phytoab.com.

Application Example



Recom: 2.5 ng, 10 ng and 25 ng recombinant protein containing the peptide for immunization and having a molecular mass of 42 kDa.

Electrophoresis: 12% SDS-PAGE

Transfer: blotting to NC (nitrocellulose) membrane for 1 h.

Blocking: 5% skim milk at RT or 4°C for 1 h.

Primary antibody: 1:1000 dilution overnight at 4°C.

Secondary antibody: 1:10000 dilution using Goat Anti-Rabbit IgG H&L (HRP) (Cat# PHY6000).

Detection: using chemiluminescence substrate and image were captured with CCD camera.