

# Anti-Actin, N-terminal antibody

Catalog: PHY3427S

## Product Information

<b>Description:</b>	Rabbit polyclonal antibody
<b>Background:</b>	Actin is an ancient conserved protein that is encoded by multiple isoforms in multi-cellular organisms. There are eight functional actin genes in the Arabidopsis genome.
<b>Synonyms:</b>	Actin, ACT1/3/4/7/11/12
<b>Immunogen:</b>	KLH-conjugated synthetic peptide (16 aa from N terminal section) derived from <i>Arabidopsis thaliana</i> ACT1 (AT2G37620), ACT3 (AT3G53750), ACT4 (AT5G59370), ACT7 (AT5G09810), ACT11 (AT3G12110) and ACT12 (AT3G46520).
<b>Form:</b>	Lyophilized
<b>Quantity:</b>	150 µg
<b>Purification:</b>	Serum
	Peptide affinity form antibody available upon request at <a href="mailto:info@phytoab.com">info@phytoab.com</a> .
<b>Reconstitution:</b>	Reconstitution with 150 µl of sterile water. "Note: please spin tube briefly prior to opening it to avoid any losses that might occur from lyophilized material adhering to the cap or sides of the tube".
<b>Stability &amp; Storage:</b>	Use a manual defrost freezer and avoid repeated freeze-thaw cycles. 12 months from date of receipt, -20 to -70°C as supplied. 6 months, -20 to -70°C under sterile conditions after reconstitution. 1 month, 2 to 8°C under sterile conditions after reconstitution.
<b>Shipping:</b>	The product is shipped at 4°C. Upon receipt, store it immediately at the temperature recommended above.

## Application Information

<b>Recommended Dilution:</b>	Western Blot (1:1000-1:2000) Note: Optimal dilutions/concentrations should be determined by the end user.
<b>Expected / apparent MW:</b>	42 kDa
<b>Predicted Reactivity:</b>	Among species analyzed, the sequence of the synthetic peptide used for immunization is 100% homologous with the sequence in <i>Brassica</i>

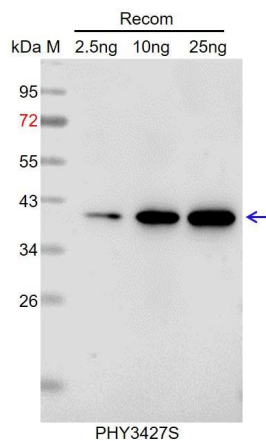
Research Use Only

*rapa, Brassica napus, Hordeum vulgare, Zea mays, Glycine max, Triticum aestivum, Gossypium raimondii, Vitis vinifera, Cucumis sativus, Populus trichocarpa, Solanum tuberosum, Panicum virgatum, Oryza sativa, Sorghum bicolor, Nicotiana tabacum.*

The sequence of the synthetic peptide used for immunization is 88% (14/16) homologues with the sequence in ACT2 (AT3G18780) and ACT8 (AT1G49240).

For more species homologues information, please contact tech support at [tech@phytoab.com](mailto:tech@phytoab.com).

## Application Example



Recom: 2.5 ng, 10 ng and 25 ng recombinant protein containing the peptide for immunization and having a molecular mass of 40 kDa.

**Electrophoresis:** 12% SDS-PAGE

**Transfer:** blotting to NC (nitrocellulose) membrane for 1 h.

**Blocking:** 5% skim milk at RT or 4°C for 1 h.

**Primary antibody:** 1:1000 dilution overnight at 4°C.

**Secondary antibody:** 1:10000 dilution using Goat Anti-Rabbit IgG H&L (HRP) (Cat# PHY6000).

**Detection:** using chemiluminescence substrate and image were captured with CCD camera.