

# Anti-Nitrate reductase [NADH] 1, N-terminal antibody

Catalog: PHY3063A

## Product Information

<b>Description:</b>	Rabbit polyclonal antibody
<b>Background:</b>	<p>Assimilatory nitrate reductase is an enzyme of the assimilative metabolism involved in reduction of nitrate to nitrite. The nitrite is immediately reduced to ammonia (probably via hydroxylamine) by the activity of nitrite reductase.</p> <p>Plants contain 2 forms of NR: NADH-NR (most common form in plants and algae, predominantly found in green tissues) and NAD(P)H-NR (uses NADH or NADPH as the electron donor, constitutively expressed in plants at a low level). NADH-NR is a homodimer of two identical subunits (100-115 kDa each, hold together by a Mo-cofactor) each of them coded by up to three genes (NR1-3, NIA1-NIA3).</p>
<b>Synonyms:</b>	NR1, GNR1, NIA1, NITRATE REDUCTASE 1
<b>Immunogen:</b>	KLH-conjugated synthetic peptide (19 aa from N terminal section) derived from <i>Arabidopsis thaliana</i> NR1 (AT1G77760).
<b>Form:</b>	Lyophilized
<b>Quantity:</b>	150 µg
<b>Purification:</b>	Immunogen affinity purified
<b>Reconstitution:</b>	<p>Reconstitution with 150 µl of sterile 1×PBS (PH=7.4).</p> <p>"Note: please spin tube briefly prior to opening it to avoid any losses that might occur from lyophilized material adhering to the cap or sides of the tube".</p>
<b>Stability &amp; Storage:</b>	<p>Use a manual defrost freezer and avoid repeated freeze-thaw cycles.</p> <p>12 months from date of receipt, -20 to -70°C as supplied.</p> <p>6 months, -20 to -70°C under sterile conditions after reconstitution.</p> <p>1 month, 2 to 8°C under sterile conditions after reconstitution.</p>
<b>Shipping:</b>	The product is shipped at 4°C. Upon receipt, store it immediately at the temperature recommended above.

## Application Information

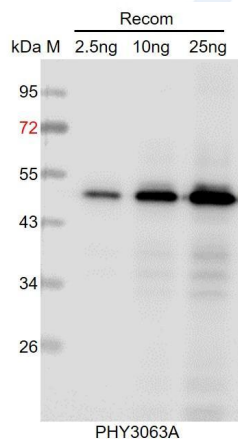
<b>Recommended Dilution:</b>	<p>Western Blot (1:1000-1:2000)</p> <p>Note: Optimal dilutions/concentrations should be determined by the end user.</p>
------------------------------	---

Research Use Only

**Expected / apparent MW:** 103 kDa

**Predicted Reactivity:** For more species homologues information, please contact tech support at [tech@phytoab.com](mailto:tech@phytoab.com).

## Application Example



Recom: 2.5 ng, 10 ng and 25 ng recombinant protein containing the peptide for immunization and having a molecular mass of 50 kDa.

**Electrophoresis:** 12% SDS-PAGE

**Transfer:** blotting to NC (nitrocellulose) membrane for 1 h.

**Blocking:** 5% skim milk at RT or 4°C for 1 h.

**Primary antibody:** 1:1000 dilution overnight at 4°C.

**Secondary antibody:** 1:10000 dilution using Goat Anti-Rabbit IgG H&L (HRP) (Cat# PHY6000).

**Detection:** using chemiluminescence substrate and image were captured with CCD camera.