

# Anti- Plasma membrane aquaporin 2/3 antibody

Catalog: PHY0176A

## Product Information

<b>Description:</b>	Rabbit polyclonal antibody
<b>Background:</b>	PIP2/3 are members of the plasma membrane intrinsic protein PIP. They may be involved in the osmoregulation in plants under high osmotic stress such as under a high salt condition.
<b>Synonyms:</b>	PIP2/3
<b>Immunogen:</b>	KLH-conjugated synthetic peptide (14 aa from Central section) derived from <i>Arabidopsis thaliana</i> PIP3A(AT4G35100), PIP3B(AT2G16850), PIP2D(AT3G54820), PIP2A(AT3G53420).
<b>Form:</b>	Lyophilized
<b>Quantity:</b>	150 µg
<b>Purification:</b>	Immunogen Affinity Purified
<b>Reconstitution:</b>	Reconstitution with 150 µl of sterile 1×PBS (PH=7.4). "Note: please spin tube briefly prior to opening it to avoid any losses that might occur from lyophilized material adhering to the cap or sides of the tube".
<b>Stability &amp; Storage:</b>	Use a manual defrost freezer and avoid repeated freeze-thaw cycles. 12 months from date of receipt, -20 to -70°C as supplied. 6 months, -20 to -70°C under sterile conditions after reconstitution. 1 month, 2 to 8°C under sterile conditions after reconstitution.
<b>Shipping:</b>	The product is shipped at 4°C. Upon receipt, store it immediately at the temperature recommended above.

## Application Information

<b>Recommended Dilution:</b>	Western Blot (1:1000-1:2000) Note: Optimal dilutions/concentrations should be determined by the end user.
<b>Expected / apparent MW:</b>	30 kDa
<b>Predicted Reactivity:</b>	The sequence of the synthetic peptide used for immunization is 93% homologues with the sequence in PIP2B (AT2G37170), PIP2C (AT2G37180), PIP2F (AT5G60660), PIP2E (AT2G39010), PIP1C (AT1G01620), PIP1D (AT4G23400), PIP1E (AT4G00430), and 86%

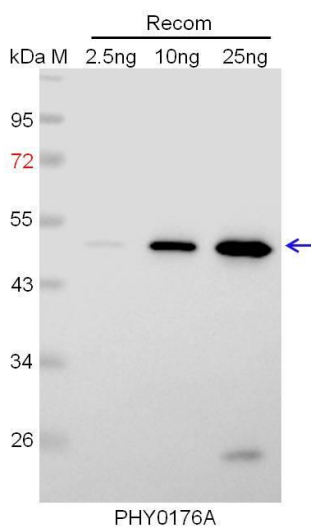
Research Use Only

homologues with the sequence in PIP1B (AT2G45960), PIP1A (AT3G61430).

Among species analyzed, the sequence of the synthetic peptide used for immunization is 100% homologues with the sequence in *Populus trichocarpa*, *Glycine max*, *Medicago truncatula*, *Triticum aestivum*, *Gossypium raimondii*, *Brassica napus*, *Brassica rapa*, *Spinacia oleracea*, *Hordeum vulgare*, *Zea mays*, *Setaria viridis*, *Nicotiana tabacum*, *Solanum lycopersicum*, *Solanum tuberosum*.

For more species homologues information, please contact tech support at [tech@phytoab.com](mailto:tech@phytoab.com).

## Application Example



Recom: 2.5 ng, 10 ng and 25 ng recombinant protein containing the peptide for immunization and having a molecular mass of 50 kDa.

**Electrophoresis:** 12% SDS-PAGE

**Transfer:** blotting to NC (nitrocellulose) membrane for 1 h.

**Blocking:** 5% skim milk at RT or 4°C for 1 h.

**Primary antibody:** 1:1000 dilution overnight at 4°C.

**Secondary antibody:** 1:8000 dilution using Goat Anti-Rabbit IgG H&L (HRP) (Cat# PHY6000).

**Detection:** using chemiluminescence substrate and image were captured with CCD camera.