

# Anti-PsaD subunit of photosystem I antibody

Catalog: PHY7968S

## Product Information

<b>Description:</b>	Rabbit polyclonal antibody
<b>Background:</b>	Photosystem I (PSI) consists of at least eleven subunits in the thylakoid membrane, and mediates photosynthetic electron transfer from plastocyanin to ferredoxin. PsaD subunit, which is located at the stromal surface of the PSI, is thought to be the docking site of ferredoxin, and encoded by the nuclear gene <i>PsaD-1</i> (AT4G02770) and <i>PsaD-2</i> (AT1G03130).
<b>Synonyms:</b>	PsaD, PSI-D
<b>Immunogen:</b>	KLH-conjugated synthetic peptide (16 aa from C terminal section) derived from <i>Arabidopsis thaliana</i> PsaD-1 (AT4G02770) and PsaD-2 (AT1G03130).
<b>Form:</b>	Lyophilized
<b>Quantity:</b>	150 µg
<b>Purification:</b>	Serum  Peptide affinity form antibody available upon request at <a href="mailto:info@phytoab.com">info@phytoab.com</a> .
<b>Reconstitution:</b>	Reconstitution with 150µl of sterile water.  "Note: please spin tube briefly prior to opening it to avoid any losses that might occur from lyophilized material adhering to the cap or sides of the tube".
<b>Stability &amp; Storage:</b>	Use a manual defrost freezer and avoid repeated freeze-thaw cycles. 12 months from date of receipt, -20 to -70°C as supplied. 6 months, -20 to -70°C under sterile conditions after reconstitution. 1 month, 2 to 8°C under sterile conditions after reconstitution.
<b>Shipping:</b>	The product is shipped at 4°C. Upon receipt, store it immediately at the temperature recommended above.

## Application Information

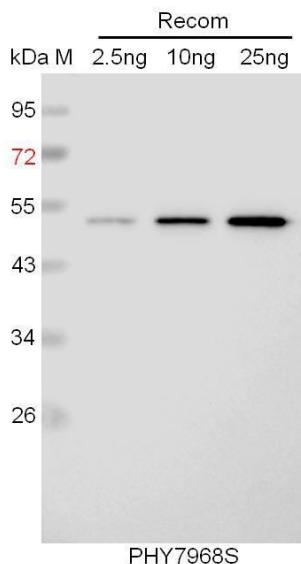
<b>Recommended Dilution:</b>	Western Blot (1:1000-1:2000)  Note: Optimal dilutions/concentrations should be determined by the end user.
<b>Expected / apparent MW:</b>	22 kDa
<b>Predicted Reactivity:</b>	Among species analyzed, the sequence of the synthetic peptide used for immunization is 100% homologues with the sequence in <i>Brassica</i>

Research Use Only

*napus, Brassica rapa, Gossypium raimondii, zea mays, Glycine max, Nicotiana tabacum, Spinacia oleracea, Medicago truncatula, Solanum lycopersicum, Cucumis sativus, Solanum tuberosum, Triticum aestivum, Hordeum vulgare, Populus trichocarpa, Vitis vinifera, Setaria viridis, Oryza sativa, Panicum virgatum, Sorghum bicolor*, and 80-99% homologues with the sequence in *Chlamydomonas reinhardtii*, *Synechococcus elongatus* PCC 7942, *Synechocystis* sp. PCC 6803.

For more species homologues information, please contact tech support at [tech@phytoab.com](mailto:tech@phytoab.com).

## Application Example



Recom: 2.5 ng, 10 ng and 25 ng recombinant protein containing the peptide for immunization and having a molecular mass of 52 kDa.

**Electrophoresis:** 12% SDS-PAGE

**Transfer:** blotting to NC (nitrocellulose) membrane for 1 h.

**Blocking:** 5% skim milk at RT or 4°C for 1 h.

**Primary antibody:** 1:1000 dilution overnight at 4°C.

**Secondary antibody:** 1:10000 dilution using Goat Anti-Rabbit IgG H&L (HRP) (Cat# PHY6000).

**Detection:** using chemiluminescence substrate and image were captured with CCD camera.