

Anti-Catalase 1, C-terminal antibody

Catalog: PHY3681A

Product Information

Description:	Rabbit polyclonal antibody
Background:	Catalase is a tetrameric iron porphyrin that catalyses the dismutation of H ₂ O ₂ to water and oxygen. The Arabidopsis genome encodes three catalase subunits, CAT1 (AT1G20630), CAT2 (AT4G35090), and CAT3 (AT1G20620). These three individual subunits associate to form at least six catalase isoforms.
Synonyms:	Cat1, Catalase 1
Immunogen:	KLH-conjugated synthetic peptide (16 aa from C terminal section) derived from <i>Arabidopsis thaliana</i> Cat1 (AT1G20630).
Form:	Lyophilized
Quantity:	150 µg
Purification:	Immunogen Affinity Purified
Reconstitution:	Reconstitution with 150 µl of sterile 1×PBS (PH=7.4). "Note: please spin tube briefly prior to opening it to avoid any losses that might occur from lyophilized material adhering to the cap or sides of the tube".
Stability & Storage:	Use a manual defrost freezer and avoid repeated freeze-thaw cycles. 12 months from date of receipt, -20 to -70°C as supplied. 6 months, -20 to -70°C under sterile conditions after reconstitution. 1 month, 2 to 8°C under sterile conditions after reconstitution.
Shipping:	The product is shipped at 4°C. Upon receipt, store it immediately at the temperature recommended above.

Application Information

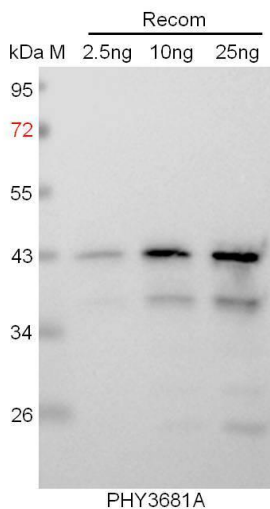
Recommended Dilution:	Western Blot (1:1000-1:2000) Note: Optimal dilutions/concentrations should be determined by the end user.
Expected / apparent MW:	57 kDa
Predicted Reactivity:	Among species analyzed, the sequence of the synthetic peptide used for immunization is 80-99% homologues with the sequence in <i>Brassica napus</i> , <i>Brassica rapa</i> , <i>Sorghum bicolor</i> , <i>Setaria viridis</i> ,

Research Use Only

Panicum virgatum, Zea mays, Glycine max, Cucumis sativus, Gossypium raimondii, Oryza sativa, Populus trichocarpa, Nicotiana tabacum, Solanum tuberosum, Medicago truncatula, Spinacia oleracea, Solanum lycopersicum.

For homologues with other species especially algae, please contact tech support at tech@phytoab.com.

Application Example



Recom: 2.5 ng, 10 ng and 25 ng recombinant protein containing the peptide for immunization and having a molecular mass of 43 kDa.

Electrophoresis: 12% SDS-PAGE

Transfer: blotting to NC (nitrocellulose) membrane for 1 h.

Blocking: 5% skim milk at RT or 4°C for 1 h.

Primary antibody: 1:1000 dilution overnight at 4°C.

Secondary antibody: 1:10000 dilution using Goat Anti-Rabbit IgG H&L (HRP) (Cat# PHY6000).

Detection: using chemiluminescence substrate and image were captured with CCD camera.