

Anti-Catalase 1/2 antibody

Catalog: PHY0501A

Product Information

| | |
|------------------------|-----------------------------------------------------------------------------------------------------------------------------------------------------------------------------------------------------------------------------------------------------------------------------------------------------------------------------------------|
| Description: | Rabbit polyclonal antibody |
| Background: | Catalase is a tetrameric iron porphyrin that catalyses the dismutation of H ₂ O ₂ to water and oxygen. The <i>Arabidopsis</i> genome encodes three catalase subunits, CAT1 (AT1G20630), CAT2 (AT4G35090), and CAT3 (AT1G20620). These three individual subunits associate to form at least six catalase isoforms. |
| Synonyms: | Cat 1/2, Catalase 1/2 |
| Immunogen: | KLH-conjugated synthetic peptide (15 aa from N terminal section) derived from <i>Arabidopsis thaliana</i> Cat2 (AT4G35090) and Cat1 (AT1G20630). |
| Form: | Lyophilized |
| Quantity: | 150 µg |
| Purification: | Immunogen affinity purified |
| Reconstitution: | Reconstitution with 150 µl of sterile 1XPBS (PH=7.4). "Note: please spin tube briefly prior to opening it to avoid any losses that might occur from lyophilized material adhering to the cap or sides of the tube". |
| Stability & | Use a manual defrost freezer and avoid repeated freeze-thaw cycles. |
| Storage: | 12 months from date of receipt, -20 to -70°C as supplied. 6 months, -20 to -70°C under sterile conditions after reconstitution. 1 month, 2 to 8°C under sterile conditions after reconstitution. |
| Shipping: | The product is shipped at 4°C. Upon receipt, store it immediately at the temperature recommended above. |

Application Information

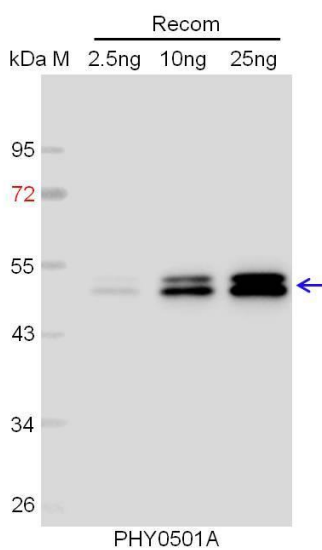
| | |
|--------------------------------|--------------------------------------------------------------------------------------------------------------------------------------------------------------------------------------------------------------------------------------------------------------------------------------------------------------------------------------|
| Recommended Dilution: | Western Blot (1:1000-1:2000) Note: Optimal dilutions/concentrations should be determined by the end user. |
| Expected / apparent MW: | 57 kDa |
| Predicted Reactivity: | Among species analyzed, the sequence of the synthetic peptide used for immunization is 100% homologues with the sequence in <i>Brassica napus</i> , <i>Brassica rapa</i> , <i>Vitis vinifera</i> , <i>Glycine max</i> , <i>Zea mays</i> , <i>Triticum aestivum</i> , <i>Populus trichocarpa</i> , <i>Chlamydomonas reinhardtii</i> , |

Research Use Only

Gossypium raimondii, *Sorghum bicolor*, *Solanum tuberosum*,
Solanum lycopersicum, *Panicum virgatum*, *Hordeum vulgare*,
Cucumis sativus, *Setaria viridis*, *Spinacia oleracea*, *Oryza sativa*,
Nicotiana tabacum, *Medicago truncatula*.

The sequence of the synthetic peptide used for immunization is 80% (12 / 15) homologues with the sequence in CAT3 (AT1G20620).
 For more species homologues information, please contact tech support at tech@phytoab.com.

Application Example



Recom: 2.5 ng, 10 ng and 25 ng recombinant protein containing the peptide for immunization and having a molecular mass of 50 kDa.

Electrophoresis: 12% SDS-PAGE

Transfer: blotting to NC (nitrocellulose) membrane for 1 h.

Blocking: 5% skim milk at RT or 4°C for 1 h.

Primary antibody: 1:1000 dilution overnight at 4°C.

Secondary antibody: 1:10000 dilution using Goat Anti-Rabbit IgG H&L (HRP) (Cat# PHY6000).

Detection: using chemiluminescence substrate and image were captured with CCD camera.