

Anti-ATP synthase subunit 6, mitochondrial antibody

Catalog: PHY1139A

Product Information

Description:	Rabbit polyclonal antibody
Background:	Mitochondrial FOF1-ATP synthase is also called Complex V and it synthesizes ATP from ADP and Pi using the proton motive force created by respiratory electron transport. ATP6 (ATMG00410/ATMG01170/AT2G07741) is a subunit of mitochondrial FOF1-ATP synthase in <i>Arabidopsis</i> .
Synonyms:	ATP6
Immunogen:	KLH-conjugated synthetic peptide (15 aa from Central section) derived from <i>Arabidopsis thaliana</i> ATP6 (ATMG00410, ATMG01170, AT2G07741).
Form:	Lyophilized
Quantity:	150 µg
Purification:	Immunogen affinity purified
Reconstitution:	Reconstitution with 150 µl of sterile 1×PBS (PH=7.4). "Note: please spin tube briefly prior to opening it to avoid any losses that might occur from lyophilized material adhering to the cap or sides of the tube".
Stability & Storage:	Use a manual defrost freezer and avoid repeated freeze-thaw cycles. 12 months from date of receipt, -20 to -70°C as supplied. 6 months, -20 to -70°C under sterile conditions after reconstitution. 1 month, 2 to 8°C under sterile conditions after reconstitution.
Shipping:	The product is shipped at 4°C. Upon receipt, store it immediately at the temperature recommended above.

Application Information

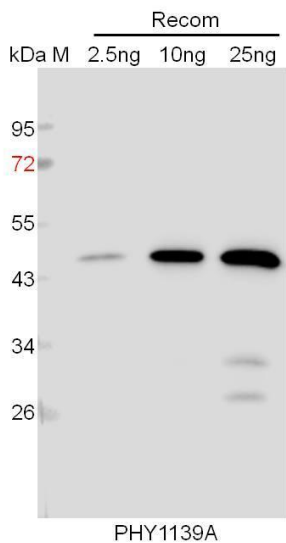
Recommended Dilution:	Western Blot (1:1000-1:2000) Note: Optimal dilutions/concentrations should be determined by the end user.
Expected/apparent MW:	42 kDa
Predicted Reactivity:	Among species analyzed, the sequence of the synthetic peptide used for immunization is 100% homologous with the sequence in <i>Solanum tuberosum</i> , <i>Nicotiana tabacum</i> , <i>Brassica rapa</i> , <i>Brassica napus</i> , and 80-99% homologous with the sequence in <i>Sorghum bicolor</i> ,

Research Use Only

Gossypium raimondii, Oryza sativa, Populus trichocarpa, Solanum lycopersicum, Glycine max, Vitis vinifera, Cucumis sativus, Spinacia oleracea, Zea mays, Hordeum vulgare, Setaria viridis, Triticum aestivum, Panicum virgatum, Medicago truncatula, .

For more species homologues information, please contact tech support at tech@phytoab.com.

Application Example



Recom: 2.5 ng, 10 ng and 25 ng recombinant protein containing the peptide for immunization and having a molecular mass of 46 kDa.

Electrophoresis: 12% SDS-PAGE

Transfer: blotting to NC (nitrocellulose) membrane for 1 h.

← **Blocking:** 5% skim milk at RT or 4°C for 1 h.

Primary antibody: 1:1000 dilution overnight at 4°C.

Secondary antibody: 1:10000 dilution using Goat Anti-Rabbit IgG H&L (HRP) (Cat# PHY6000).

Detection: using chemiluminescence substrate and image were captured with CCD camera.