

Anti-Solanesyl diphosphate synthase 1, chloroplastic antibody

Catalog: PHY7935S

Product Information

Description:	Rabbit polyclonal antibody
Background:	AtSPS1 (At1g78510) and AtSPS2 (At1g17050) are two paralogous solanesyl-diphosphate synthases that assemble the side chain of plastoquinone-9 (PQ9) in Arabidopsis plastids. By contrast, OsSPS1 is a mitochondrial-localized enzyme in rice (<i>Oryza sativa</i>) and OsSPS2, a paralog of OsSPS1 in rice (<i>Oryza sativa</i>) is a plastid-localized enzyme. Both of them synthesize solanesyl diphosphate (SPP), a precursor for plastoquinone-9 (PQ9).
Synonyms:	SPS1, ATSPS1, SOLANESYL DIPHOSPHATE SYNTHASE 1
Immunogen:	KLH-conjugated synthetic peptide (15 aa from central section) derived from <i>Arabidopsis thaliana</i> SPS1 (AT1G78510).
Form:	Lyophilized
Quantity:	150 µg
Purification:	Serum Peptide affinity form antibody available upon request at info@phytoab.com .
Reconstitution:	Reconstitution with 150 µl of sterile water. "Note: please spin tube briefly prior to opening it to avoid any losses that might occur from lyophilized material adhering to the cap or sides of the tube".
Stability & Storage:	Use a manual defrost freezer and avoid repeated freeze-thaw cycles. 12 months from date of receipt, -20 to -70°C as supplied. 6 months, -20 to -70°C under sterile conditions after reconstitution. 1 month, 2 to 8°C under sterile conditions after reconstitution.
Shipping:	The product is shipped at 4°C. Upon receipt, store it immediately at the temperature recommended above.

Application Information

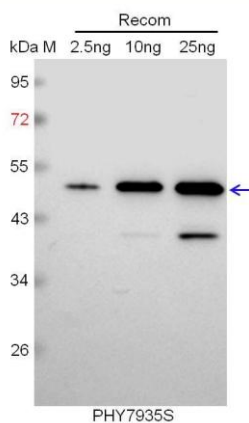
Recommended Dilution:	Western Blot (1:1000-1:2000) Note: Optimal dilutions/concentrations should be determined by the end user.
------------------------------	--

Research Use Only

Expected / apparent MW: 37 kDa

Predicted Reactivity: The sequence of the synthetic peptide used for immunization is 93% (14/15) homologues with the sequence in SPS2 (AT1G17050). Among species analyzed, the sequence of the synthetic peptide used for immunization is 87-99% homologues with the sequence in *Brassica napus*, *Brassica rapa*, *Medicago truncatula*, *Solanum tuberosum*, *populus trichocarpa*, *Vitis vinifera*, *Physcomitrella patens*. For more species homologues information, please contact tech support at tech@phytoab.com.

Application Example



Recom: 2.5 ng, 10 ng and 25 ng recombinant protein containing the peptide for immunization and having a molecular mass of 50 kDa.

Electrophoresis: 12% SDS-PAGE

Transfer: blotting to NC (nitrocellulose) membrane for 1 h.

Blocking: 5% skim milk at RT or 4°C for 1 h.

Primary antibody: 1:1000 dilution overnight at 4°C.

Secondary antibody: 1:10000 dilution using Goat Anti-Rabbit IgG H&L (HRP) (Cat# PHY6000).

Detection: using chemiluminescence substrate and image were captured with CCD camera.