

Anti-Pyruvate phosphate dikinase regulatory protein 1/2 antibody

Catalog: PHY1885A

Product Information

Description:	Rabbit polyclonal antibody
Background:	In C4 plants, the pyruvate phosphate dikinase regulatory protein (PDRP) regulates the C4 pathway enzyme pyruvate phosphate dikinase (PPDK) in response to changes in incident light intensity.
Synonyms:	PDRP1/2
Immunogen:	KLH-conjugated synthetic peptide (25 aa from central section) derived from <i>Zea mays</i> PDRP1 (Zm00001d006520), PDRP2 (Zm00001d021672).
Form:	Lyophilized
Quantity:	150 µg
Purification:	Immunogen affinity purified
Reconstitution:	Reconstitution with 150 µl of 0.01 M sterile PBS. "Note: please spin tube briefly prior to opening it to avoid any losses that might occur from lyophilized material adhering to the cap or sides of the tube".
Stability & Storage:	Use a manual defrost freezer and avoid repeated freeze-thaw cycles. 12 months from date of receipt, -20 to -70°C as supplied. 6 months, -20 to -70°C under sterile conditions after reconstitution. 1 month, 2 to 8°C under sterile conditions after reconstitution.
Shipping:	The product is shipped at 4°C. Upon receipt, store it immediately at the temperature recommended above.

Application Information

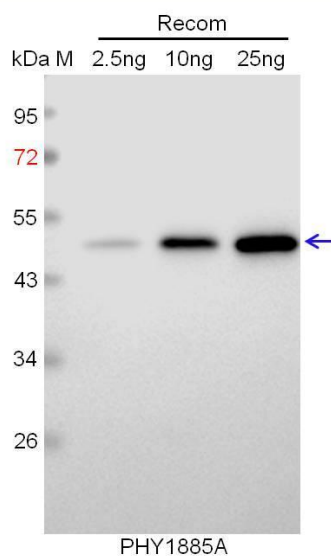
Recommended Dilution:	Western Blot (1:1000-1:2000) Note: Optimal dilutions/concentrations should be determined by the end user.
Expected / apparent MW:	42 kDa
Predicted Reactivity:	Among species analyzed, the sequence of the synthetic peptide used for immunization is 100% homologues with the sequence in <i>Glycine</i>

Research Use Only

max, *Medicago truncatula*, *Sorghum bicolor*, *Oryza sativa*, *Setaria viridis*, *Hordeum vulgare*, *Triticum aestivum*, *Panicum virgatum*, *Vitis vinifera*, *Cucumis sativus*, *Populus trichocarpa*, *Gossypium raimondii*, *Spinacia oleracea*, *Medicago truncatula*, and 80-99% homologues with the sequence in *Solanum lycopersicum*, *Solanum tuberosum*, *Nicotiana tabacum*, *Arabidopsis thaliana*, *Brassica rapa*, *Brassica napus*, *Physcomitrium patens*, *Chlamydomonas reinhardtii*.

For more species homologues information, please contact tech support at tech@phytoab.com.

Application Example



Recom: 2.5 ng, 10 ng and 25 ng recombinant protein containing the peptide for immunization and having a molecular mass of 48 kDa.

Electrophoresis: 12% SDS-PAGE

Transfer: blotting to NC (nitrocellulose) membrane for 1 h.

Blocking: 5% skim milk at RT or 4°C for 1 h.

Primary antibody: 1:1000 dilution overnight at 4°C.

Secondary antibody: 1:10000 dilution using Goat Anti-Rabbit IgG H&L (HRP) (Cat# PHY6000).

Detection: using chemiluminescence substrate and image were captured with CCD camera.