

Anti-Homogentisate phytyltransferase 1, chloroplastic antibody

Catalog: PHY2798S

Product Information

Description:	Rabbit polyclonal antibody
Background:	VTE2 is involved in tocopherol biosynthesis. It has impact on seed longevity and plays a role in the adaptation to low temperature stress, notably phloem loading.
Synonyms:	VTE2, ATHPT, HOMOGENTISATE PHYTYLTRANSFERASE, HOMOGENTISATE PHYTYLTRANSFERASE 1, HPT1, TPT1, VITAMIN E 2
Immunogen:	KLH-conjugated synthetic peptide (14 aa from N terminal section) derived from <i>Arabidopsis thaliana</i> VTE2 (AT2G18950).
Form:	Lyophilized
Quantity:	150 µg
Purification:	Immunogen affinity purified
Reconstitution:	Reconstitution with 150 µl of sterile 1×PBS (PH=7.4). "Note: please spin tube briefly prior to opening it to avoid any losses that might occur from lyophilized material adhering to the cap or sides of the tube".
Stability & Storage:	Use a manual defrost freezer and avoid repeated freeze-thaw cycles. 12 months from date of receipt, -20 to -70°C as supplied. 6 months, -20 to -70°C under sterile conditions after reconstitution. 1 month, 2 to 8°C under sterile conditions after reconstitution.
Shipping:	The product is shipped at 4°C. Upon receipt, store it immediately at the temperature recommended above.

Application Information

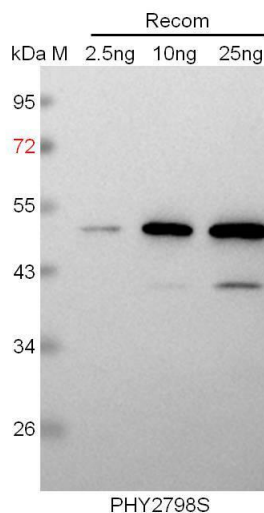
Recommended Dilution:	Western Blot (1:1000-1:2000) Note: Optimal dilutions/concentrations should be determined by the end user.
Expected / apparent MW:	44 kDa
Predicted Reactivity:	Among species analyzed, the sequence of the synthetic peptide used for immunization is 100% homologues with the sequence in <i>Brassica napus</i> , <i>Brassica rapa</i> , <i>Gossypium raimondii</i> , <i>Solanum tuberosum</i> ,

Research Use Only

and 80-99% homologues with the sequence in *Glycine max*, *Medicago truncatula*, *Solanum lycopersicum*, *Nicotiana tabacum*, *Populus trichocarpa*, *Hordeum vulgare*, *Vitis vinifera*, *Spinacia oleracea*, *Oryza sativa*, *Panicum virgatum*, *Setaria viridis*, *Triticum aestivum*, *Sorghum bicolor*.

For more species homologues information, please contact tech support at tech@phytoab.com.

Application Example



Recom: 2.5 ng, 10 ng and 25 ng recombinant protein containing the peptide for immunization and having a molecular mass of 49 kDa.

Electrophoresis: 12% SDS-PAGE

Transfer: blotting to NC (nitrocellulose) membrane for 1 h.

Blocking: 5% skim milk at RT or 4°C for 1 h.

Primary antibody: 1:1000 dilution overnight at 4°C.

Secondary antibody: 1:10000 dilution using Goat Anti-Rabbit IgG H&L (HRP) (Cat# PHY6000).

Detection: using chemiluminescence substrate and image were captured with CCD camera.