

Anti-PsbP domain-containing protein 1, chloroplastic antibody

Catalog: PHY1635A

Product Information

Description:	Rabbit polyclonal antibody
Background:	PPD1 is a nuclear-encoded thylakoid luminal protein that is associated with photosystem I (PSI) but is not an integral subunit of PSI. It is a PSI assembly factor that assists the proper folding and integration of PsaB and PsaA into the thylakoid membrane. It is involved in the assembly of PSI reaction center heterodimer core.
Synonyms:	PPD1, PSBP-DOMAIN PROTEIN1
Immunogen:	KLH-conjugated synthetic peptide (15 aa from C terminal section) derived from <i>Arabidopsis thaliana</i> PPD1 (AT4G15510).
Form:	Lyophilized
Quantity:	150 µg
Purification:	Immunogen affinity purified
Reconstitution:	Reconstitution with 150 µl of sterile 1×PBS (PH=7.4). "Note: please spin tube briefly prior to opening it to avoid any losses that might occur from lyophilized material adhering to the cap or sides of the tube".
Stability & Storage:	Use a manual defrost freezer and avoid repeated freeze-thaw cycles. 12 months from date of receipt, -20 to -70°C as supplied. 6 months, -20 to -70°C under sterile conditions after reconstitution. 1 month, 2 to 8°C under sterile conditions after reconstitution.
Shipping:	The product is shipped at 4°C. Upon receipt, store it immediately at the temperature recommended above.

Application Information

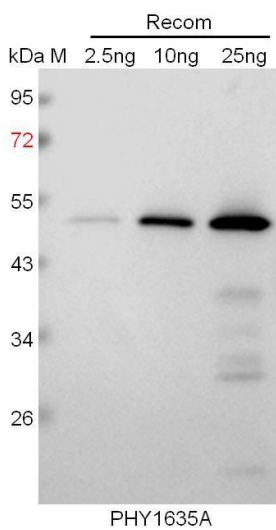
Recommended Dilution:	Western Blot (1:1000-1:2000) Note: Optimal dilutions/concentrations should be determined by the end user.
Expected/apparent MW:	32 kDa
Predicted Reactivity:	Among species analyzed, the sequence of the synthetic peptide used

Research Use Only

for immunization is 100% homologues with the sequence in *Populus trichocarpa*, *Gossypium raimondii*, and 80-99% homologues with the sequence in *Brassica rapa*, *Brassica napus*, *Nicotiana tabacum*, *Spinacia oleracea*, *Glycine max*, *Solanum tuberosum*, *Solanum lycopersicum*, *Medicago truncatula*, *Vitis vinifera*, *Zea mays*, *Triticum aestivum*, *Hordeum vulgare*, *Cucumis sativus*.

For more species homologues information, please contact tech support at tech@phytoab.com.

Application Example



Recom: 2.5 ng, 10 ng and 25 ng recombinant protein containing the peptide for immunization and having a molecular mass of 49 kDa.

Electrophoresis: 12% SDS-PAGE

Transfer: blotting to NC (nitrocellulose) membrane for 1 h.

Blocking: 5% skim milk at RT or 4°C for 1 h.

Primary antibody: 1:1000 dilution overnight at 4°C.

Secondary antibody: 1:10000 dilution using Goat Anti-Rabbit IgG H&L (HRP) (Cat# PHY6000).

Detection: using chemiluminescence substrate and image were captured with CCD camera.