

Anti-Cullin-3A, C-terminal antibody

Catalog: PHY3664A

Product Information

Description:	Rabbit polyclonal antibody
Background:	CUL3A is ubiquitously expressed in plants and is able to interact with the ring-finger protein RBX1. Arabidopsis CUL3 forms E3 protein complexes with certain BTB domain proteins.
Synonyms:	CUL3A, ATCUL3, ATCUL3A, CUL3, CULLIN 3, CULLIN 3A.
Immunogen:	KLH-conjugated synthetic peptide (16 aa from C terminal section) derived from <i>Arabidopsis thaliana</i> CUL3A (AT1G26830).
Form:	Lyophilized
Quantity:	150 µg
Purification:	Immunogen affinity purified
Reconstitution:	Reconstitution with 150 µl of sterile 1×PBS (PH=7.4). "Note: please spin tube briefly prior to opening it to avoid any losses that might occur from lyophilized material adhering to the cap or sides of the tube".
Stability & Storage:	Use a manual defrost freezer and avoid repeated freeze-thaw cycles. 12 months from date of receipt, -20 to -70°C as supplied. 6 months, -20 to -70°C under sterile conditions after reconstitution. 1 month, 2 to 8°C under sterile conditions after reconstitution.
Shipping:	The product is shipped at 4°C. Upon receipt, store it immediately at the temperature recommended above.

Application Information

Recommended Dilution:	Western Blot (1:1000-1:2000) Note: Optimal dilutions/concentrations should be determined by the end user.
Expected / apparent MW:	85 kDa
Predicted Reactivity:	Among species analyzed, the sequence of the synthetic peptide used for immunization is 80-99% homologues with the sequence in <i>Brassica napus</i> , <i>Brassica rapa</i> , <i>Populus trichocarpa</i> , <i>Nicotiana tabacum</i> , <i>Gossypium raimondii</i> , <i>Zea mays</i> , <i>Vitis vinifera</i> , <i>Solanum</i>

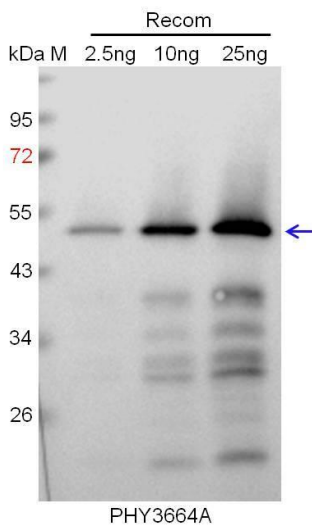
Research Use Only

tuberosum, Solanum lycopersicum, Oryza sativa, Medicago truncatula, Sorghum bicolor, Panicum virgatum, Setaria viridis, Glycine max, Hordeum vulgare, Triticum aestivum, Spinacia oleracea, Physcomitrium patens.

The sequence of the synthetic peptide used for immunization is 94% homologues with the sequence in CUL3B (AT1G69670).

For more species homologues information, please contact tech support at tech@phytoab.com.

Application Example



Recom: 2.5 ng, 10 ng and 25 ng recombinant protein containing the peptide for immunization and having a molecular mass of 49 kDa.

Electrophoresis: 12% SDS-PAGE

Transfer: blotting to NC (nitrocellulose) membrane for 1 h.

Blocking: 5% skim milk at RT or 4°C for 1 h.

Primary antibody: 1:1000 dilution overnight at 4°C.

Secondary antibody: 1:10000 dilution using Goat Anti-Rabbit IgG H&L (HRP) (Cat# PHY6000).

Detection: using chemiluminescence substrate and image were captured with CCD camera.