

Anti-Heat shock 70 kDa protein 6, chloroplastic antibody

Catalog: PHY3702A

Product Information

Description:	Rabbit polyclonal antibody
Background:	70 kDa heat shock proteins (Hsp70s) act as molecular chaperones involved in essential cellular processes such as protein folding and protein transport across membranes. They also play a role in the cell's response to a wide range of stress conditions.
Synonyms:	cpHsc70-1, CHLOROPLAST HEAT SHOCK PROTEIN 70-1, CPHSC70-1, AtHsp70-6, HSP70-6
Immunogen:	KLH-conjugated synthetic peptide (15 aa from N terminal section) derived from <i>Arabidopsis thaliana</i> cpHsc70-1 (AT4G24280).
Form:	Lyophilized
Quantity:	150 µg
Purification:	Immunogen affinity purified
Reconstitution:	Reconstitution with 150 µl of sterile 1×PBS (PH=7.4). "Note: please spin tube briefly prior to opening it to avoid any losses that might occur from lyophilized material adhering to the cap or sides of the tube".
Stability & Storage:	Use a manual defrost freezer and avoid repeated freeze-thaw cycles. 12 months from date of receipt, -20 to -70°C as supplied. 6 months, -20 to -70°C under sterile conditions after reconstitution. 1 month, 2 to 8°C under sterile conditions after reconstitution.
Shipping:	The product is shipped at 4°C. Upon receipt, store it immediately at the temperature recommended above.

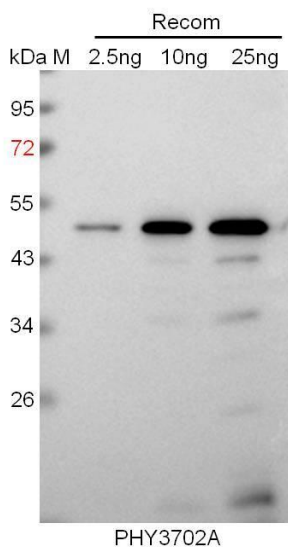
Application Information

Recommended Dilution:	Western Blot (1:1000-1:2000) Note: Optimal dilutions/concentrations should be determined by the end user.
Expected / apparent MW:	77 kDa
Predicted Reactivity:	Among species analyzed, the sequence of the synthetic peptide used for immunization is 100% homologues with the sequence in <i>Oryza</i>

Research Use Only

sativa, *Zea mays*, *Sorghum bicolor*, *Panicum virgatum*, *Setaria viridis*, and 80-99% homologues with the sequence in *Brassica rapa*, *Brassica napus*, *Glycine max*, *Cucumis sativus*, *Medicago truncatula*, *Nicotiana tabacum*, *Vitis vinifera*, *Solanum tuberosum*, *Populus trichocarpa*, *Solanum lycopersicum*, *Hordeum vulgare*, *Triticum aestivum*, *Gossypium raimondii*, *Spinacia oleracea*, *Physcomitrium patens*. For more species homologues information, please contact tech support at tech@phytoab.com.

Application Example



Recom: 2.5 ng, 10 ng and 25 ng recombinant protein containing the peptide for immunization and having a molecular mass of 49 kDa.

Electrophoresis: 12% SDS-PAGE

Transfer: blotting to NC (nitrocellulose) membrane for 1 h.

Blocking: 5% skim milk at RT or 4°C for 1 h.

Primary antibody: 1:1000 dilution overnight at 4°C.

Secondary antibody: 1:10000 dilution using Goat Anti-Rabbit IgG H&L (HRP) (Cat# PHY6000).

Detection: using chemiluminescence substrate and image were captured with CCD camera.