

Anti- HIGH-LEVEL EXPRESSION OF SUGAR-INDUCIBLE GENE 2, C-terminal antibody

Catalog: PHY7861A

Product Information

Description:	Rabbit polyclonal antibody
Background:	HSI2, also called VAL1, is a member of the ABI3 family of B3 domain proteins and functions as an active repressor of the Spo minimal promoter through the EAR motif. It contains a plant-specific B3 DNA-binding domain. It is localized in the nucleus via a nuclear localization sequence located in the fourth conserved region of the C-terminal B3 domain. HSI2 is also an epigenetic repressor as it also contains functional plant homeodomain-like (PHD-L) and zinc-finger Cys- and Trp-containing (CW) domains associated with epigenetic regulation.
Synonyms:	HSI2, HIGH-LEVEL EXPRESSION OF SUGAR-INDUCIBLE GENE 2, VAL1, VIVIPAROUS1/ABI3-LIKE1, VP1/ABI3-LIKE 1
Immunogen:	KLH-conjugated synthetic peptide (15 aa from C terminal section) derived from <i>Arabidopsis thaliana</i> VAL1 (AT2G30470).
Form:	Lyophilized
Quantity:	150 µg
Purification:	Immunogen affinity purified
Reconstitution:	Reconstitution with 150 µl of sterile 1XPBS (PH=7.4) containing 30% glycerol. "Note: please spin tube briefly prior to opening it to avoid any losses that might occur from lyophilized material adhering to the cap or sides of the tube".
Stability & Storage:	Use a manual defrost freezer and avoid repeated freeze-thaw cycles. 12 months from date of receipt, -20 to -70°C as supplied. 6 months, -20 to -70°C under sterile conditions after reconstitution. 1 month, 2 to 8°C under sterile conditions after reconstitution.
Shipping:	The product is shipped at 4°C. Upon receipt, store it immediately at the temperature recommended above.

Application Information

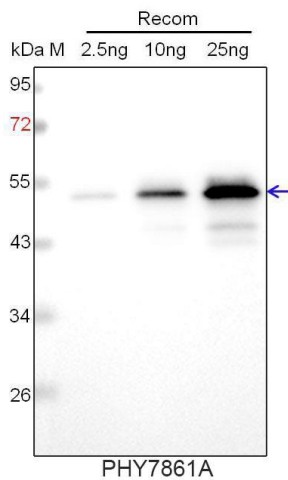
Recommended Dilution:	Western Blot (1:1000-1:2000) Note: Optimal dilutions/concentrations should be determined by the end user.
------------------------------	--------------------------------------------------------------------------------------------------------------

Research Use Only

Expected / apparent MW: 87 kDa

Predicted Reactivity: For more species homologues information, please contact tech support at tech@phytoab.com.

Application Example



Recom: 2.5 ng, 10 ng and 25 ng recombinant protein containing the peptide for immunization and having a molecular mass of 52 kDa.

Electrophoresis: 12% SDS-PAGE

Transfer: blotting to NC (nitrocellulose) membrane for 1 h.

Blocking: 5% skim milk at RT or 4°C for 1 h.

Primary antibody: 1:1000 dilution overnight at 4°C.

Secondary antibody: 1:10000 dilution using Goat Anti-Rabbit IgG H&L (HRP) (Cat# PHY6000).

Detection: using chemiluminescence substrate and image were captured with CCD camera.