

Anti-COPPER RESPONSE DEFECT 1 antibody

Catalog: PHY3696A

Product Information

Description:	Rabbit polyclonal antibody
Background:	CRD1 is the catalytic component of the MgProto monomethylester (MgProtoME) cyclase complex that catalyzes the formation of the isocyclic ring in chlorophyll biosynthesis. It mediates the cyclase reaction, which results in the formation of divinylprotochlorophyllide (Pchlde) characteristic of all chlorophylls from magnesium-protoporphyrin IX 13-monomethyl ester (MgPMME).
Synonyms:	CRD1, ACSF, CHL27, COPPER RESPONSE DEFECT 1
Immunogen:	KLH-conjugated synthetic peptide (17 aa from N terminal section) derived from Arabidopsis thaliana CRD1 (AT3G56940).
Form:	Lyophilized
Quantity:	150 µg
Purification:	Immunogen affinity purified
Reconstitution:	Reconstitution with 150 µl of sterile 1XPBS (PH=7.4) containing 30% glycerol. "Note: please spin tube briefly prior to opening it to avoid any losses that might occur from lyophilized material adhering to the cap or sides of the tube".
Stability & Storage:	Use a manual defrost freezer and avoid repeated freeze-thaw cycles. 12 months from date of receipt, -20 to -70°C as supplied. 6 months, -20 to -70°C under sterile conditions after reconstitution. 1 month, 2 to 8°C under sterile conditions after reconstitution.
Shipping:	The product is shipped at 4°C. Upon receipt, store it immediately at the temperature recommended above.

Application Information

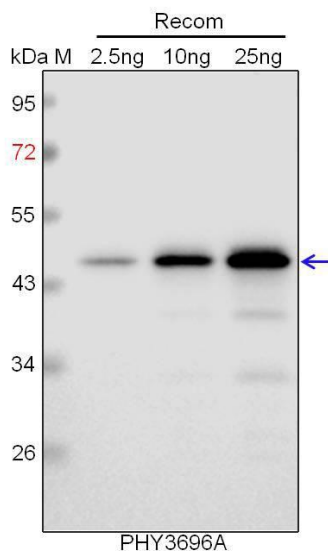
Recommended Dilution:	Western Blot (1:1000-1:2000) Note: Optimal dilutions/concentrations should be determined by the end user.
Expected / apparent MW:	48 kDa
Predicted Reactivity:	Among species analyzed, the sequence of the synthetic peptide used for immunization is 100% homologues with the sequence in <i>Brassica</i>

Research Use Only

napus, *Brassica rapa*, *Oryza sativa*, *Triticum aestivum*, *Solanum tuberosum*, *Glycine max*, *Physcomitrium patens*, *Hordeum vulgare*, *Setaria viridis*, *Gossypium raimondii*, *Panicum virgatum*, *Cucumis sativus*, *Zea mays*, *Sorghum bicolor*, *Populus trichocarpa*, *Solanum lycopersicum*, *Nicotiana tabacum*, *Vitis vinifera*, *Medicago truncatula*, *Spinacia oleracea*, and 80-99% homologues with the sequence in *Chlamydomonas reinhardtii*.

For more species homologues information, please contact tech support at tech@phytoab.com.

Application Example



Recom: 2.5 ng, 10 ng and 25 ng recombinant protein containing the peptide for immunization and having a molecular mass of 45 kDa.

Electrophoresis: 12% SDS-PAGE

Transfer: blotting to NC (nitrocellulose) membrane for 1 h.

Blocking: 5% skim milk at RT or 4°C for 1 h.

Primary antibody: 1:1000 dilution overnight at 4°C.

Secondary antibody: 1:10000 dilution using Goat Anti-Rabbit IgG H&L (HRP) (Cat# PHY6000).

Detection: using chemiluminescence substrate and image were captured with CCD camera.