

Anti-Ribulose biphosphate carboxylase small chain antibody

Catalog: PHY5454S

Product Information

Description:	Rabbit polyclonal antibody
Background:	D-ribulose-1,5-bisphosphate carboxylase/oxygenase (Rubisco) is the major enzyme assimilating atmospheric CO ₂ into the biosphere. This enzyme contains two subunits, the large subunit (RbcL) and the small subunit (RbcS).
Synonyms:	RIBULOSE BISPHOSPHATE CARBOXYLASE SMALL CHAIN, RbcS
Immunogen:	Recombinant <i>Synechococcus elongatus</i> PCC 7942 RbcS protein (syc0129_c).
Form:	Lyophilized
Quantity:	150 µg
Purification:	Serum Purified antibody available upon request at info@phytoab.com .
Reconstitution:	Reconstitution with 150 µl of sterile water. "Note: please spin tube briefly prior to opening it to avoid any losses that might occur from lyophilized material adhering to the cap or sides of the tube".
Stability & Storage:	Use a manual defrost freezer and avoid repeated freeze-thaw cycles. 12 months from date of receipt, -20 to -70°C as supplied. 6 months, -20 to -70°C under sterile conditions after reconstitution. 1 month, 2 to 8°C under sterile conditions after reconstitution.
Shipping:	The product is shipped at 4°C. Upon receipt, store it immediately at the temperature recommended above.

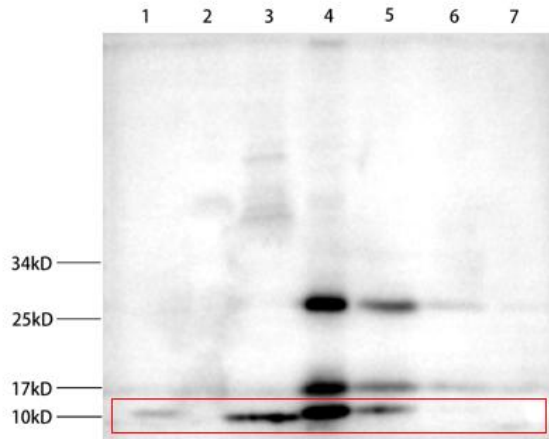
Application Information

Recommended Dilution:	Western Blot (1:1000-1:2000) Note: Optimal dilutions/concentrations should be determined by the end user.
Expected / apparent MW:	13 kDa
Confirmed Reactivity:	<i>Synechococcus elongatus</i> PCC7942, <i>Chlamydomonas reinhardtii</i> protein (4A+) For more species homologues information, please contact tech

Research Use Only

support at tech@phytoab.com.

Application Example



Electrophoresis: 10% SDS-PAGE

Transfer: blotting to PVDF membrane for 1 h.

Blocking: 5% skim milk at RT or 4°C for 1 h.

Primary antibody: 1:1000 dilution overnight at 4°C.

Secondary antibody: 1:10000 dilution using Goat Anti-Rabbit IgG H&L (HRP) (Cat# PHY6000).

Detection: using chemiluminescence substrate and image were captured with CCD camera.

Lane 1: 30 ug total *Chlamydomonas reinhardtii* protein (4A+)

Lane 2: 30 ug total yeast protein

Lane 3: 30 ug total *Synechococcus elongatus* PCC7942 protein

Lane 4: 250 ng purified protein of rbcS

Lane 5: 50 ng purified protein of rbcS

Lane 6: 10 ng purified protein of rbcS

Lane 7: 2 ng purified protein of rbcS