

# Anti-H<sup>+</sup>-ATPase 1/2/3, plasma membrane-type antibody

Catalog: PHY0760A

## Product Information

<b>Description:</b>	Rabbit polyclonal antibody
<b>Background:</b>	H <sup>+</sup> -ATPase 1/2/3 are plasma membrane proton ATPase.
<b>Synonyms:</b>	H <sup>+</sup> -ATPase 1/2/3, AHA1/2/3, HA1/2/3
<b>Immunogen:</b>	KLH-conjugated synthetic peptide (16 aa from N terminal section) derived from <i>Arabidopsis thaliana</i> H <sup>+</sup> -ATPase 1 (AT2G18960), H <sup>+</sup> -ATPase 2 (AT4G30190) and H <sup>+</sup> -ATPase 3 (AT5G57350).
<b>Form:</b>	Lyophilized
<b>Quantity:</b>	150 µg
<b>Purification:</b>	Immunogen affinity purified
<b>Reconstitution:</b>	Reconstitution with 150 µl of sterile 1XPBS (PH=7.4) containing 30% glycerol. "Note: please spin tube briefly prior to opening it to avoid any losses that might occur from lyophilized material adhering to the cap or sides of the tube".
<b>Stability &amp; Storage:</b>	Use a manual defrost freezer and avoid repeated freeze-thaw cycles. 12 months from date of receipt, -20 to -70°C as supplied. 6 months, -20 to -70°C under sterile conditions after reconstitution. 1 month, 2 to 8°C under sterile conditions after reconstitution.
<b>Shipping:</b>	The product is shipped at 4°C. Upon receipt, store it immediately at the temperature recommended above.

## Application Information

<b>Recommended Dilution:</b>	Western Blot (1:1000-1:2000) Note: Optimal dilutions/concentrations should be determined by the end user.
<b>Expected / apparent MW:</b>	104 kDa
<b>Predicted Reactivity:</b>	Among species analyzed, the sequence of the synthetic peptide used for immunization is 100% homologues with the sequence in <i>Populus trichocarpa</i> , <i>Zea mays</i> , <i>Panicum virgatum</i> , <i>Brassica rapa</i> , <i>Brassica napus</i> , <i>Glycine max</i> , <i>Cucumis sativus</i> , <i>Vitis vinifera</i> , <i>Nicotiana truncatula</i> , <i>Setaria viridis</i> , <i>Gossypium raimondii</i> , <i>Spinacia oleracea</i> ,

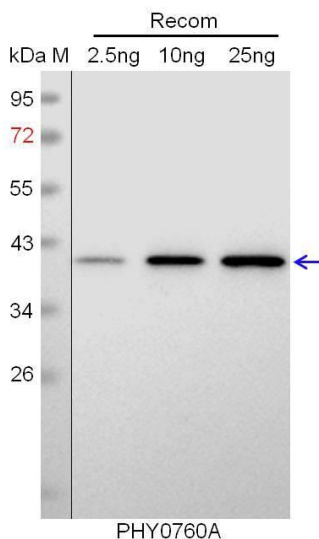
Research Use Only

### *Sorghum bicolor.*

The sequence of the synthetic peptide used for immunization is 94% (15 / 16) homologues with the sequence in H<sup>+</sup>-ATPase 4 (AT3G47950), H<sup>+</sup>-ATPase 6 (AT2G07560), H<sup>+</sup>-ATPase 7 (AT3G60330), H<sup>+</sup>-ATPase 8 (AT3G42640) and AT4G11730, 88% (14 / 16) homologues with the sequence in H<sup>+</sup>-ATPase 9 (AT1G80660), H<sup>+</sup>-ATPase 11 (AT5G62670) and AHA10 (AT1G17260), and 81% (13 / 16) homologues with the sequence in H<sup>+</sup>-ATPase 5 (AT2G24520).

For more species homologues information, please contact tech support at [tech@phytoab.com](mailto:tech@phytoab.com).

### Application Example



Recom: 2.5 ng, 10 ng and 25 ng recombinant protein containing the peptide for immunization and having a molecular mass of 41 kDa.

**Electrophoresis:** 12% SDS-PAGE

**Transfer:** blotting to NC (nitrocellulose) membrane for 1 h.

**Blocking:** 5% skim milk at RT or 4°C for 1 h.

**Primary antibody:** 1:1000 dilution overnight at 4°C.

**Secondary antibody:** 1:10000 dilution using Goat Anti-Rabbit IgG H&L (HRP) (Cat# PHY6000).

**Detection:** using chemiluminescence substrate and image were captured with CCD camera.