

Anti-PsbN protein, C-terminal antibody

Catalog: PHY3520A

Product Information

Description:	Rabbit polyclonal antibody
Background:	PsbN is a low molecular weight protein of 4.7 kDa with a predicted single N-terminal trans-membrane domain. PsbN in plants shares 49% sequence similarity with its cyanobacterial homolog with the highest identity in the hydrophilic C-terminal part. In higher plants, PsbN is involved in photosystem II assembly.
Synonyms:	PsbN, PHOTOSYSTEM II REACTION CENTER PROTEIN N
Immunogen:	KLH-conjugated synthetic peptide (14 aa from C terminal section) derived from <i>Arabidopsis thaliana</i> PsbN (ATCG00700).
Form:	Lyophilized
Quantity:	150 µg
Purification:	Immunogen affinity purified
Reconstitution:	Reconstitution with 150 µl of sterile 1XPBS (PH=7.4) containing 30% glycerol. "Note: please spin tube briefly prior to opening it to avoid any losses that might occur from lyophilized material adhering to the cap or sides of the tube".
Stability & Storage:	Use a manual defrost freezer and avoid repeated freeze-thaw cycles. 12 months from date of receipt, -20 to -70°C as supplied. 6 months, -20 to -70°C under sterile conditions after reconstitution. 1 month, 2 to 8°C under sterile conditions after reconstitution.
Shipping:	The product is shipped at 4°C. Upon receipt, store it immediately at the temperature recommended above.

Application Information

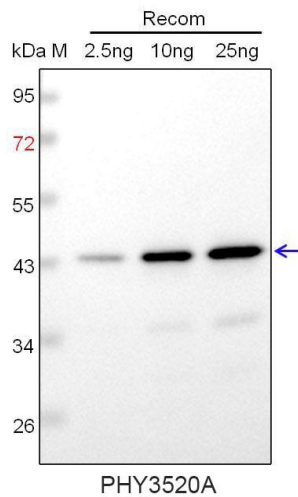
Recommended Dilution:	Western Blot (1:1000-1:2000) Note: Optimal dilutions/concentrations should be determined by the end user.
Expected / apparent MW:	5 kDa
Predicted Reactivity:	Among species analyzed, the sequence of the synthetic peptide used for immunization is 100% homologous with the sequence in <i>Triticum</i>

Research Use Only

aestivum, *Medicago truncatula*, *Glycine max*, *Oryza sativa*, *Vitis vinifera*, *Brassica rapa*, and 80-99% homologues with the sequence in *Gossypium raimondii*, *Sorghum bicolor*.

For more species homologues information, please contact tech support at tech@phytoab.com.

Application Example



Recom: 2.5 ng, 10 ng and 25 ng recombinant protein containing the peptide for immunization and having a molecular mass of 43 kDa.

Electrophoresis: 12% SDS-PAGE

Transfer: blotting to NC (nitrocellulose) membrane for 1 h.

Blocking: 5% skim milk at RT or 4°C for 1 h.

Primary antibody: 1:1000 dilution overnight at 4°C.

Secondary antibody: 1:10000 dilution using Goat Anti-Rabbit IgG H&L (HRP) (Cat# PHY6000).

Detection: using chemiluminescence substrate and image were captured with CCD camera.