

# Anti-Glutamate decarboxylase 1 antibody

Catalog: PHY2544A

## Product Information

<b>Description:</b>	Rabbit polyclonal antibody
<b>Background:</b>	GAD1 is one of two isoforms of glutamate decarboxylase. It catalyzes the conversion of glutamate to 4-aminobutanoate (GABA).
<b>Synonyms:</b>	GAD, ATGAD1, GAD1, GLUTAMATE DECARBOXYLASE, GLUTAMATE DECARBOXYLASE 1
<b>Immunogen:</b>	KLH-conjugated synthetic peptide (16 aa from Central section) derived from <i>Arabidopsis thaliana</i> GAD1 (AT5G17330) and GAD2 (AT1G65960).
<b>Form:</b>	Lyophilized
<b>Quantity:</b>	150 µg
<b>Purification:</b>	Immunogen affinity purified
<b>Reconstitution:</b>	Reconstitution with 150 µl of sterile 1XPBS (PH=7.4) containing 30% glycerol. "Note: please spin tube briefly prior to opening it to avoid any losses that might occur from lyophilized material adhering to the cap or sides of the tube".
<b>Stability &amp; Storage:</b>	Use a manual defrost freezer and avoid repeated freeze-thaw cycles. 12 months from date of receipt, -20 to -70°C as supplied. 6 months, -20 to -70°C under sterile conditions after reconstitution. 1 month, 2 to 8°C under sterile conditions after reconstitution.
<b>Shipping:</b>	The product is shipped at 4°C. Upon receipt, store it immediately at the temperature recommended above.

## Application Information

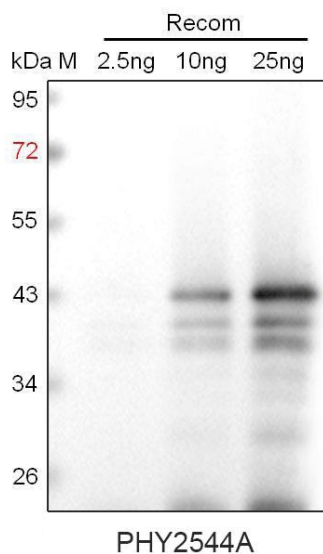
<b>Recommended Dilution:</b>	Western Blot (1:1000-1:2000) Note: Optimal dilutions/concentrations should be determined by the end user.
<b>Expected / apparent MW:</b>	57 kDa
<b>Predicted Reactivity:</b>	Among species analyzed, the sequence of the synthetic peptide used for immunization is 100% homologues with the sequence in <i>Brassica rapa</i> , <i>Brassica napus</i> , <i>Gossypium raimondii</i> , <i>Vitis vinifera</i> , <i>Cucumis sativus</i> , <i>Populus trichocarpa</i> , <i>Cucumis sativus</i> , and 80-99%

Research Use Only

homologues with the sequence in *Triticum aestivum*, *Hordeum vulgare*, *Oryza sativa*, *Panicum virgatum*, *Setaria viridis*, *Solanum tuberosum*, *Solanum lycopersicum*, *Glycine max*, *Nicotiana tabacum*, *Medicago truncatula*.

For more species homologues information, please contact tech support at [tech@phytoab.com](mailto:tech@phytoab.com).

### Application Example



Recom: 2.5 ng, 10 ng and 25 ng recombinant protein containing the peptide for immunization and having a molecular mass of 43 kDa. Signals from the degraded recombinant protein were also detected.

**Electrophoresis:** 12% SDS-PAGE

**Transfer:** blotting to NC (nitrocellulose) membrane for 1 h.

**Blocking:** 5% skim milk at RT or 4°C for 1 h.

**Primary antibody:** 1:1000 dilution overnight at 4°C.

**Secondary antibody:** 1:10000 dilution using Goat Anti-Rabbit IgG H&L (HRP) (Cat# PHY6000).

**Detection:** using chemiluminescence substrate and image were captured with CCD camera.