

Anti-Xanthine dehydrogenase 1, C-terminal antibody

Catalog: PHY1013A

Product Information

| | |
|---------------------------------|---|
| Description: | Rabbit polyclonal antibody |
| Background: | <p>XDH1 is a xanthine dehydrogenase involved in purine catabolism. It catalyzes the oxidation of hypoxanthine to xanthine and the oxidation of xanthine to urate. XDH1 regulates the level of ureides and plays an important role during plant growth and development, senescence and response to stresses. Moreover, it possesses NADH oxidase activity and may contribute to the generation of superoxide anions in planta.</p> |
| Synonyms: | XDH1, AtXDH1, XANTHINE DEHYDROGENASE 1 |
| Immunogen: | KLH-conjugated synthetic peptide (15 aa from C terminal section) derived from <i>Arabidopsis thaliana</i> XDH1 (AT4G34890). |
| Form: | Lyophilized |
| Quantity: | 150 µg |
| Purification: | Immunogen affinity purified |
| Reconstitution: | <p>Reconstitution with 150 µl of sterile 1XPBS (PH=7.4) containing 30% glycerol. "Note: please spin tube briefly prior to opening it to avoid any losses that might occur from lyophilized material adhering to the cap or sides of the tube".</p> |
| Stability & Storage: | <p>Use a manual defrost freezer and avoid repeated freeze-thaw cycles.</p> <p>12 months from date of receipt, -20 to -70°C as supplied.</p> <p>6 months, -20 to -70°C under sterile conditions after reconstitution.</p> <p>1 month, 2 to 8°C under sterile conditions after reconstitution.</p> |
| Shipping: | The product is shipped at 4°C. Upon receipt, store it immediately at the temperature recommended above. |

Application Information

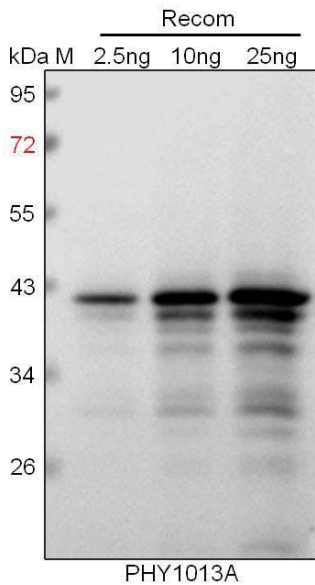
| | |
|--------------------------------|---|
| Recommended Dilution: | <p>Western Blot (1:1000-1:2000)</p> <p>Note: Optimal dilutions/concentrations should be determined by the end user.</p> |
| Expected / apparent MW: | 150 kDa |
| Predicted Reactivity: | Among species analyzed, the sequence of the synthetic peptide used |

Research Use Only

for immunization is 80-99% homologues with the sequence in *Brassica rapa*, *Brassica napus*. The sequence of the synthetic peptide used for immunization is 80% homologues with the sequence in XDH2 (AT4G34900).

For more species homologues information, please contact tech support at tech@phytoab.com.

Application Example



Recom: 2.5 ng, 10 ng and 25 ng recombinant protein containing the peptide for immunization and having a molecular mass of 42 kDa. Signals from the degraded recombinant protein were also detected.

Electrophoresis: 12% SDS-PAGE

Transfer: blotting to NC (nitrocellulose) membrane for 1 h.

Blocking: 5% skim milk at RT or 4°C for 1 h.

Primary antibody: 1:1000 dilution overnight at 4°C.

Secondary antibody: 1:10000 dilution using Goat Anti-Rabbit IgG H&L (HRP) (Cat# PHY6000).

Detection: using chemiluminescence substrate and image were captured with CCD camera.