

Anti-Catalase 1 antibody

Catalog: PHY0014A

Product Information

| | |
|---------------------------------|---|
| Description: | Rabbit polyclonal antibody |
| Background: | Catalase is a tetrameric iron porphyrin that catalyses the dismutation of H ₂ O ₂ to water and oxygen. The <i>Arabidopsis</i> genome encodes three catalase subunits, CAT1 (At1g20630), CAT2 (At4g35090), and CAT3 (At1g20620). These three individual subunits associate to form at least six catalase isoforms. |
| Synonyms: | Cat1, Catalase 1 |
| Immunogen: | KLH-conjugated synthetic peptide (15 aa from C terminal section) derived from <i>Arabidopsis thaliana</i> Cat1 (AT1G20630). |
| Form: | Lyophilized |
| Quantity: | 150 µg |
| Purification: | Immunogen affinity purified |
| Reconstitution: | Reconstitution with 150µl of 0.01M sterile PBS. "Note: please spin tube briefly prior to opening it to avoid any losses that might occur from lyophilized material adhering to the cap or sides of the tube". |
| Stability & Storage: | Use a manual defrost freezer and avoid repeated freeze-thaw cycles. 12 months from date of receipt, -20 to -70°C as supplied. 6 months, -20 to -70°C under sterile conditions after reconstitution. 1 month, 2 to 8°C under sterile conditions after reconstitution. |
| Shipping: | The product is shipped at 4°C. Upon receipt, store it immediately at the temperature recommended above. |

Application Information

| | |
|------------------------------|---|
| Recommended Dilution: | Western Blot (1:1000-1:2000) Note: Optimal dilutions/concentrations should be determined by the end user. |
| Expected/apparent MW: | 57 kDa |
| Confirmed Reactivity: | <i>Arabidopsis thaliana</i> |
| Predicted Reactivity: | Among species analyzed, the sequence of the synthetic peptide used for immunization is 80-99% homologues with the sequence in <i>Brassica</i> |

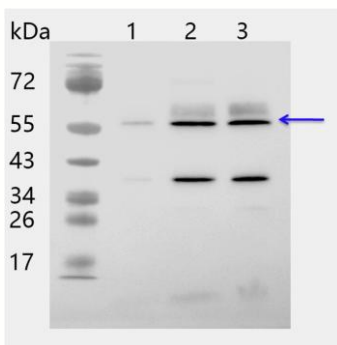
Research Use Only

napus, Brassica rapa, Zea mays, Sorghum bicolor, Glycine max, Cucumis sativus, Populus trichocarpa, Panicum virgatum, Setaria viridis.

The sequence of the synthetic peptide used for immunization is 80% homologues with the sequence in CAT3 (At1g20620), and 50% in CAT2 (At4g35090).

For more species homologues information, please contact tech support at tech@phytoab.com.

Application Example



Lane 1: 10 µg total protein from *Arabidopsis thaliana* leaf.

Lane 2: 50 µg total protein from *Arabidopsis thaliana* leaf.

Lane 3: 100 µg total protein from *Arabidopsis thaliana* leaf.

Electrophoresis: 12.5% SDS-Urea-PAGE

Transfer: blotting to NC (nitrocellulose) membrane for 1 h.

Blocking: 5% skim milk at RT or 4°C for 1 h.

Primary antibody: 1:1000 dilution overnight at 4°C.

Secondary antibody: 1:20000 dilution using Goat Anti-Rabbit IgG H&L (HRP) (Cat# PHY6000).

Detection: using chemiluminescence substrate and image were captured with CCD camera.