

## Anti-Maize dwarf mosaic virus (MDMV) Capsid protein antibody

**Catalog:** NAV1014-002S

**Quantity:** 200 µL

### Immunogen Information:

#### Background

Maize dwarf mosaic virus (MDMV)

#### Immunogen

KLH-conjugated synthetic peptide (15 aa from N terminal section) derived from Maize dwarf mosaic virus MDMV Capsid protein (NCBI: NP\_734152). [We also have antibodies for different epitopes from the Capsid protein. Please request at \[info@nanodiaincs.com\]\(mailto:info@nanodiaincs.com\) or <https://www.nanodiaincs.com>.](#)

### Basic Information:

**Purification:** Serum

Peptide affinity form antibody available upon request at [info@nanodiaincs.com](mailto:info@nanodiaincs.com).

**Clonality:** Polyclonal      **Expected MW:** 33 kDa      **Host:** Rabbit

### Product Information:

**Form:** Lyophilized

#### Reconstitution

Reconstitution with 200 µL of sterile water.

"Note: please spin tube briefly prior to opening it to avoid any losses that might occur from lyophilized material adhering to the cap or sides of the tube".

#### Stability & Storage

Use a manual defrost freezer and avoid repeated freeze-thaw cycles.

12 months from date of receipt, -20 to -70°C as supplied.

6 months, -20 to -70°C under sterile conditions after reconstitution.

1 month, 2 to 8°C under sterile conditions after reconstitution.

#### Shipping

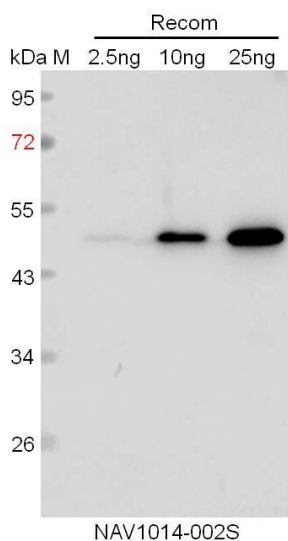
The product is shipped at 4°C. Upon receipt, store it immediately at the temperature recommended above.

### Applications Information:

**Recommended Dilution:** WB (1:1000-1:2000)

**Predicted Reactivity:** For more species homologues information, please contact tech support at [info@nanodiaincs.com](mailto:info@nanodiaincs.com).

## Example



Recom: 2.5 ng, 10 ng and 25 ng recombinant protein containing the peptide for immunization and having a molecular mass of 48 kDa.

**Electrophoresis:** 12% SDS-PAGE

**Transfer:** blotting to NC (nitrocellulose) membrane for 1 h.

**Blocking:** 5% skim milk at RT or 4°C for 1 h.

**Primary antibody:** 1:1000 dilution overnight at 4°C.

**Secondary antibody:** 1:10000 dilution using Goat Anti-Rabbit IgG H&L (HRP) (Cat# PHY6000).

**Detection:** using chemiluminescence substrate and image were captured with CCD camera.