

Anti-Cotton leaf curl virus (CLCuV) Capsid protein antibody

Catalog: NAV1047-002S

Quantity: 200 µL

Immunogen Information:

Background

Cotton leaf curl virus (CLCuV)

Immunogen

KLH-conjugated synthetic peptide (14 aa from Central section) derived from Cotton leaf curl virus CLCuV Capsid protein (Uniprot: A0A1D8RG62 NCBI: YP_009316017). [We also have antibodies for different epitopes from the Capsid protein. Please request at info@nanodiaincs.com](mailto:info@nanodiaincs.com) or <https://www.nanodiaincs.com>.

Basic Information:

Purification: Serum

Peptide affinity form antibody available upon request at info@nanodiaincs.com.

Clonality: Polyclonal **Expected MW:** 30 kDa **Host:** Rabbit

Product Information:

Form: Lyophilized

Reconstitution

Reconstitution with 200 µL of sterile water.

"Note: please spin tube briefly prior to opening it to avoid any losses that might occur from lyophilized material adhering to the cap or sides of the tube".

Stability & Storage

Use a manual defrost freezer and avoid repeated freeze-thaw cycles.

12 months from date of receipt, -20 to -70°C as supplied.

6 months, -20 to -70°C under sterile conditions after reconstitution.

1 month, 2 to 8°C under sterile conditions after reconstitution.

Shipping

The product is shipped at 4°C. Upon receipt, store it immediately at the temperature recommended above.

Applications Information:

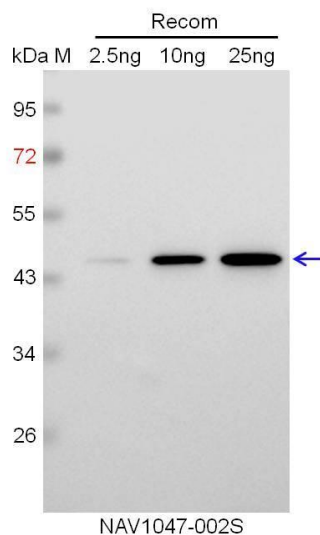
Recommended Dilution: WB (1:1000-1:2000)

Predicted Reactivity: Among species analyzed, the sequence of the synthetic peptide used for immunization is 100% homologues with the sequence in Croton yellow vein mosaic virus, Papaya leaf curl virus, Fenugreek yellow vein virus, Chilli leaf curl virus, Corchorus yellow vein mosaic virus, Sunn hemp leaf distortion virus, French bean severe leaf curl virus, Tomato leaf curl virus, Bhendi yellow vein virus, Malvastrum yellow vein virus, Senna leaf curl virus, Tobacco curly shoot virus,

Pepper leaf curl virus, Pedilanthus leaf curl virus, Euphorbia leaf curl virus, Indian cassava mosaic virus, Sri Lankan cassava mosaic virus, Cherry tomato leaf curl virus, Okra enation leaf curl virus, Euphorbia leaf curl virus.

For more species homologues information, please contact tech support at info@nanodiaincs.com.

Example



Recom: 2.5 ng, 10 ng and 25 ng recombinant protein containing the peptide for immunization and having a molecular mass of 45 kDa.

Electrophoresis: 12% SDS-PAGE

Transfer: blotting to NC (nitrocellulose) membrane for 1 h.

Blocking: 5% skim milk at RT or 4°C for 1 h.

Primary antibody: 1:1000 dilution overnight at 4°C.

Secondary antibody: 1:8000 dilution using Goat Anti-Rabbit IgG

H&L (HRP) (Cat# PHY6000).

Detection: using chemiluminescence substrate and image were captured with CCD camera.