

# Anti-Histone H3-like centromeric protein CENH3 antibody

Catalog: PHY6565A

## Product Information

<b>Description:</b>	Rabbit polyclonal antibody
<b>Background:</b>	CENH3, a centromere-specific histone H3 variant, is the epigenetic marker defining the functional centromere location on each chromosome. It replaces canonical H3 within centromeric nucleosomes. CENH3 provides the essential foundation for assembling the kinetochore, the large protein complex that forms during cell division. The kinetochore attached to CENH3 nucleosomes serves as the direct attachment site for spindle microtubules, enabling accurate chromosome segregation to daughter cells.
<b>Synonyms:</b>	CENH3, XP_015937714, A0A6P4C3J1, XP_020985593, A0A6P5MRZ1
<b>Immunogen:</b>	KLH-conjugated synthetic peptide (16 aa from N terminal section) derived from <i>Arachis duranensis</i> CENH3 isoform X1 and X2 (XP_015937714 and XP_020985593).
<b>Form:</b>	Lyophilized
<b>Quantity:</b>	150 µg
<b>Purification:</b>	Immunogen affinity purified
<b>Reconstitution:</b>	Reconstitution with 150 µl of sterile 1XPBS (PH=7.4) containing 30% glycerol. "Note: please spin tube briefly prior to opening it to avoid any losses that might occur from lyophilized material adhering to the cap or sides of the tube".
<b>Stability &amp; Storage:</b>	Use a manual defrost freezer and avoid repeated freeze-thaw cycles. 12 months from date of receipt, -20 to -70°C as supplied. 6 months, -20 to -70°C under sterile conditions after reconstitution. 1 month, 2 to 8°C under sterile conditions after reconstitution.
<b>Shipping:</b>	The product is shipped at 4°C. Upon receipt, store it immediately at the temperature recommended above.

## Application Information

<b>Recommended Dilution:</b>	Western Blot (1:1000-1:2000)
	Note: Optimal dilutions/concentrations should be determined by the

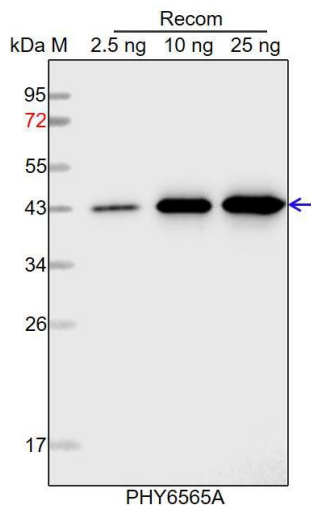
Research Use Only

end user.

**Expected / apparent MW:** 17 kDa

**Predicted Reactivity:** For more species homologues information, please contact tech support at [tech@phytoab.com](mailto:tech@phytoab.com).

### Application Example



Recom: 2.5 ng, 10 ng and 25 ng recombinant protein containing the peptide for immunization and having a molecular mass of 43 kDa.

**Electrophoresis:** 12% SDS-PAGE

**Transfer:** blotting to NC (nitrocellulose) membrane for 1 h.

**Blocking:** 5% skim milk at RT or 4°C for 1 h.

**Primary antibody:** 1:1000 dilution overnight at 4°C.

**Secondary antibody:** 1:10000 dilution using Goat Anti-Rabbit IgG H&L (HRP) (Cat# PHY6000).

**Detection:** using chemiluminescence substrate and image were captured with CCD camera.